

# Group Corporate Profile

with

## Business & Management Information

of



*Office Address:*

*Ground Floor, 14, Oshifila Street,  
Off Oba Akran Avenue, Anifowoshe,  
P.O. Box 11042, Ikeja,  
Lagos State, Nigeria*

*Email: [clindickgroupnigeria@gmail.com](mailto:clindickgroupnigeria@gmail.com)*

*Website: <http://www.clindickgroupnigeria.org>*

*Tel: +2348163355090, +2348023258323, +2348164241734, +2349021118488*

## Table of Contents

1. Introduction.....	3
2. <b>CLINDICK Group NIGERIA (CGN).....</b>	<b>3</b>
3. Group Objectives, Mission & Vision Statements.....	4
4. Group Executive Management Board.....	5
5. Group Organizational Flow Chart .....	6
6. Group General Management .....	7
7. Contribution of PPP Partner Governments .....	8
8. Foreign Financial & Engineering Partners.....	17
9. <b>CLINDICK Inter- Resources Limited .....</b>	<b>12</b>
10. <b>DAILY LABOUR Publications Limited .....</b>	<b>13</b>
11. <b>CLINDICK Management Academy NIGERIA .....</b>	<b>13</b>
12. <b>National Infrastructures Dev. Co. of Nigeria .....</b>	<b>14</b>
13. PPP Projects for the Federal Government.....	15
14. PPP Projects Management Framework.....	16
15. <b>Clinton University Nigeria. (CUNL) Limited.....</b>	<b>20</b>
16. <b>Clinton University of Nigeria, Calabar (CUNNCAL)....</b>	<b>21</b>
17. Description of the University .....	23
18. Trustees, Council & Management of <i>CUNNCAL</i> .....	28
19. <i>CUNNCAL</i> Foundation & Funds.....	30
20. <i>CUNNCAL</i> Academic Structures.....	32
21. Profile of <i>CUNNCAL</i> Board, Trustees & Council Member.....	41
22. Profile of Key Staff of CLINDICK Group NIGERIA.....	48
23. Legal, Financial & Management Consultants .....	52
24. Project Engineering Contractors & Consultants.....	54
25. Projects' Contract Execution Timelines.....	54
26. CLINDICK/FG PPP Projects Presentation Drawings.....	56
27. 8000Km Super High Way & 15000 km Skyway Transport Tech. Routes Presentation Concept.....	57
28. Presentation Drawings & Basic Buildings of <i>CUNNCAL</i> .....	58

## Introduction

This is a consolidated documentation and business information on project CLINDICK Group NIGERIA (CGN); its subsidiaries, associate companies, partners, consultants, projects and Bankers. This corporate profile is issued for information purposes, and is available on request to clients, partners, bankers, and to all whom it may concern.

It contains basic information on our organizations, structures, locations, projects, boards, management, affiliate organizations and institutions around the world. The group is a catalyst organization dedicating itself to Nigeria's economic, infrastructural and social development projects in a deliberate and consistent manner to promote education, infrastructure, agriculture, industry, healthy, food security, housing, peace, progress and prosperity of Nigeria in order to engender global harmony, fight hunger, disease, poverty, unemployment and insecurity through job creations, massive agricultural investment and industrialization to guarantee food security and provision of quality life, good health services and affordable housing in Nigeria.

The group operates a hybrid management structure which combines both functional and divisional systems of management to allow the utilization of resources, knowledge and expertise in each subsidiary or associate company of the group to better the group's executive management team as is common with large organizations, such as CLINDICK Group NIGERIA. This is a \$75 Billion USD Group of Companies and Partnership.

With a projected investment of over \$50 Billion USD in the next ten (10) years through our flagship subsidiaries (NIDC, CUNL and CUNNCAL), the group will employ 1.5million direct employees and create over 70million jobs in Nigeria within the same period through its massive industrialization programme anchored on CLINDICK/NIDC/FG/PPP scheme in the Federal Republic of Nigeria (2023-2033).

## 2. CLINDICK Group NIGERIA.

CLINDICK Group NIGERIA,(CGN), is a holding brand group of organizations with diversified Investment Portfolios in Capital Sourcing, Project Finance, Housing, Facilities Syndication, Public-Private Partnership (PPP) and Build-Operate and Transfer Schemes (BoTs). We are also Development Capital Consultants managinglarge international portfoliosof Infrastructures Development (Structured) Finance (IDF) through our Foreign and Local Bankers.

By reason of growth and expansion, the brand has progressed into a holding entity with Seven (7) main subsidiaries and eighty-seven (87) associate companies; and we have proposed through our MPV subsidiary, NIDC, and are in a PPP scheme with the Federal, States and Local Governments in Nigeria. The process of total incorporation, appropriate licensing and certifications of associate companies and businesses under the CLINDICK/NIDC/FG PPP Agreement are currently on going.

The Chairman of the Board is Mr. Clinton Uranta, a Consultant Management Scientist; President and Founder, Clinton University of Nigeria, Calabar, (CUNNCAL); while Dr. EvanseWoherem, former Group Executive Director and Deputy Managing Director of First Bank and Unity Bank respectively is the Group Managing Director and Chief Operating Officer of CLINDICK Group NIGERIA.

However, incorporations have been completed on the subsidiaries, and are ongoing on most of the associate companies, some of which are already in business while machineries have been set in motion to incorporate **and** license the associate and subsidiary University as soon as the documentation and physical development formalities are completed.

Accordingly, the proposed main subsidiary companies in CLINDICK Group NIGERIA are:

- i. CLINDICK Inter-Resources Limited
- ii. *DAILY LABOUR Publications Limited*
- iii. *CLINDICK Management Academy Nigeria Limited*
- iv. Clinton University Nigeria Limited
- v. Clinton University of Nigeria, Calabar (*CUNNCAL*)
- vi. CLINDICK Consulting NIGERIA
- vii. National Infrastructures Development Company of Nigeria (*NIDC*) Limited

### **3. Corporate Objectives**

(i) To process recoverable development finance for identifiable dedicated key national economic and social development programmes and projects through technically savvy Agencies, Corporate Business Firms and Organizations of track record.

(ii) To work on portfolio facilities that are recoverable and granted strictly on public service terms to grow businesses and drive development in third world economies for social health and economic access equality, world good, global health and economic prosperity to fight hunger, disease and poverty in the third world.

(iii) To support and work for or with organizations, institutions and government with demonstrated commitment to development strides, and who approve of our proposal and advisories we offer on projects' and Development Financing.

(iv) Based on transactional dynamics, business peculiarities and fiscal regulatory factors, to develop and propose varying financing structures to clients on case by case basis. We do this where our proposal structure and scope do not fit into existing operational templates of Clients in view of size, peculiarities and transactional dynamic differences.

(v) By all standards and scope, we are unique and shall launch Nigeria into the 4th Global Industrial Revolution Agenda which the Nation is deliberately positioned by its policy directions to facilitate.

(vi) To operate on templates dictated by the nature of, and the economic and fiscal policies of the State and organizational policy of potential clients and partners; and to offer Nigeria, a 50-year recovery term interest-free infrastructures development finance of \$55 Billion USD with five (5) years moratorium and interest free infrastructures development finance intended to strategically develop the nation of Nigeria in a planned and consistent manner within ten (10) years (2022-2032). It is the first of its kind in Nigeria; African continent, and among the very few huge single private investments made around the world.

(vii) To committed to financing every approved proposal, and pledge our cooperation to work with Clients and Partners to ensure that our programmes' finance are completely executed within the agreed time frame for maximum positive impact and the envisaged benefits and objectives to the Partners, Clients and Government.

(viii) That upon receipt of appropriate Expression of Interest (EoI) or proposal from potential technically savvy applicants, we shall avail the client of our Schemes full information details, to guide the applicant in its further administrative and operational evaluations of same in order to enable the Client structure the most efficient templates to drive its proposal, moving forward.

### **4. Mission/ Vision Statements**

#### **i. Group Mission Statement**

To work in harmony with the private and public sectors of the economy as well as government and key stakeholders to bring through creativity, ingenious specialized projects and products developments as a new business model by the employment and blend of professionalism in a transparent management manner, and under predictable economic considerations and outcomes.

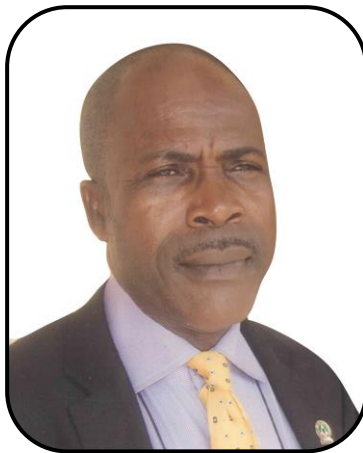
#### **ii. Group Vision Statement**

To be the most sought-after global private name in our areas of specialization, by providing unequaled standard of services through well-motivated world-class professional staff; retained and reskilled via specialized strategic knowledge and technological empowerment; and working in an atmosphere most friendly enough to task officers and staff members innate abilities with a view to achieving a blend of expertise, professionalism and excellence in our service delivery standards to all category of clients, in order to secure on sustainable basis regular and improved returns on investment to our shareholders.

## 5. GROUP EXECUTIVE BOARD



**Dr. E.E. Woheren, Ph.D.**  
Group Managing Director/COO



**C.D. Uranta, MBMA, FCIA, FIMC,**  
President & Group Chief Executive



**Dr. (Mrs.) E.I Okonkwo, Ph.D.**  
Senior Vice President/ SGDMD



**Dr. J.A. Ombu, Ph.D. FCA**  
Group Executive (Finance & Accounts)



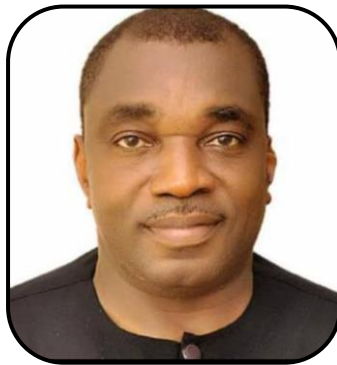
**Prof. (Engr.) O. G. Okogbaa, Ph.D.**  
Vice Chancellor & CAO, *CUNNCAL*



**Dr. (Engr.) I.J. Eyisi, MNSE**  
Group Executive (Infrastructure)



**Dr. (Mrs.) P.I. Mbano, ACIS, LLM, Ph.D**  
Group Executive (Legal Services)



**A. F. Epelle, MBA, FCA**  
Director (Investment)

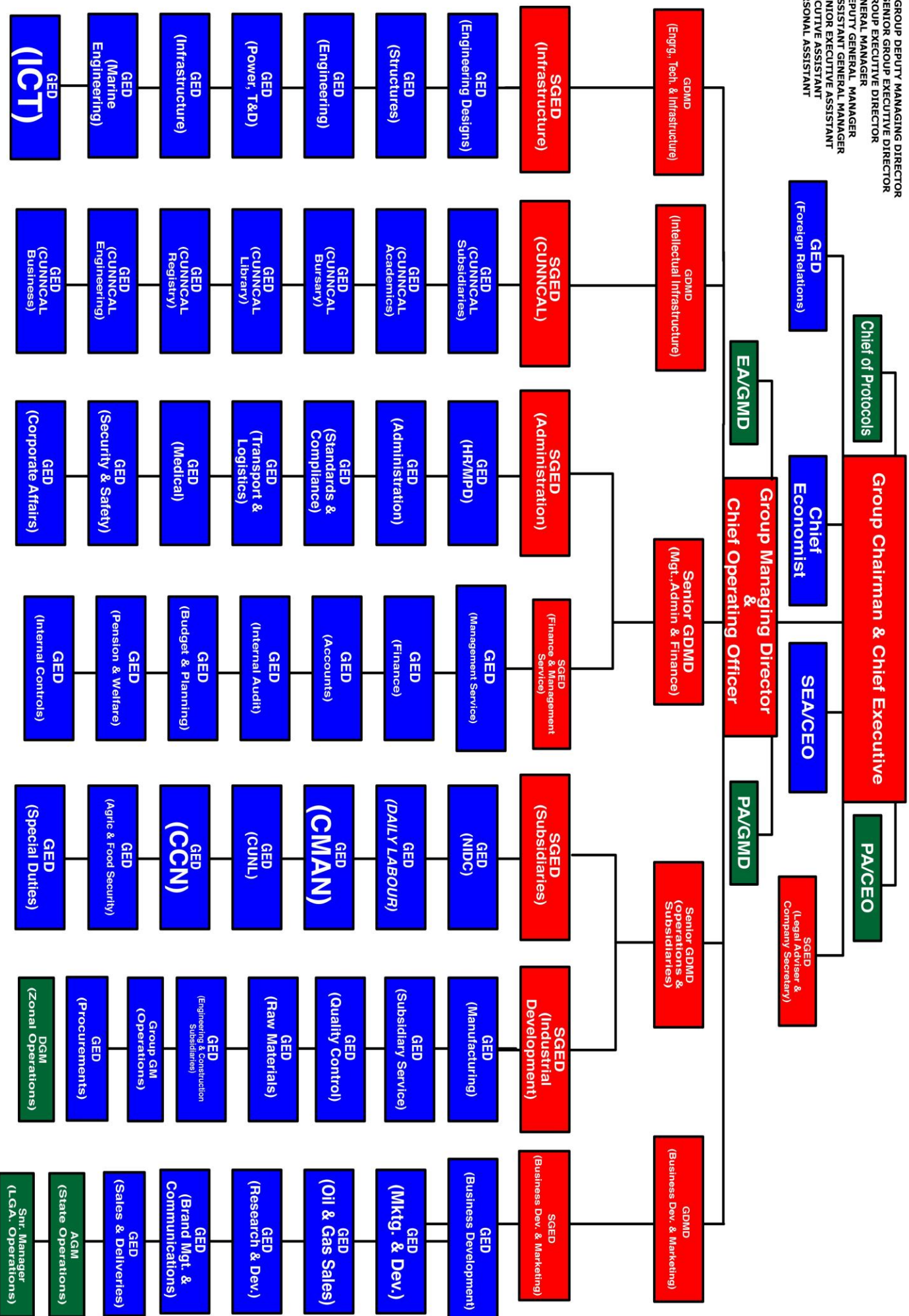


**E. A. Omoruyi, MA**  
Group Executive (Int'l Relations)

# ORGANIZATIONAL CHART OF CLINDICK Group NIGERIA

## KEY

GDMD - GROUP DEPUTY MANAGING DIRECTOR  
SGED - SENIOR GROUP EXECUTIVE DIRECTOR  
GM - GROUP EXECUTIVE DIRECTOR  
GM - GENERAL MANAGER  
DGM - DEPUTY GENERAL MANAGER  
AGM - ASSISTANT GENERAL MANAGER  
SEA - SENIOR EXECUTIVE ASSISTANT  
EA - EXECUTIVE ASSISTANT  
PA - PERSONAL ASSISTANT



## 7. GROUP EXECUTIVE BOARD & MANAGEMENT

### 1. Group Executive Board

- |  |                                      |
|--|--------------------------------------|
| i. C.D. Uranta, <i>MBMA, FCIA, FIMC, FSCT (Sx.)</i>          | - Group Chairman/ Chief Executive    |
| ii. Dr. E.E. Woherem, <i>B.Sc, MBA, M.Sc, Ph.D</i>           | - GMD/COO & Technology Advisor       |
| iii. Dr. (Mrs.) E.I. Okonkwo, <i>Ph.D</i>                    | - Member / Investments Advisor       |
| iv. Prof. (Engr.) O.G. Okogbaa, <i>Ph.D, COREN</i>           | - Member / Academic Advisor          |
| v. A. F. Epelle, <i>B.Sc, MBA, FCA</i>                       | - Member/Financial Advisor           |
| vi. Dr. (Engr.) I.J. Eyisi, <i>B.Sc, M.Sc, Ph.D, COREN</i>   | - Member/Infrastructures Advisor     |
| vii. Representative of Shareholders                          | - Member/Management Advisor          |
| viii. Representative of Financial Partners                   | - Member/ Budgets Advisor            |
| ix. Representative of Engrg. & Technical Partners            | - Member/ Engineering Advisor        |
| x. Representative of Federal Government of Nigeria           | - Member/FG Policy Advisor           |
| xi. Representative of State Governments in Nigeria           | - Member/State Govts' Policy Advisor |
| xii. Representative of Local Governments in Nigeria          | - Member/LGAs Policy Advisor         |
| xiii. Dr. (Mrs.) P.I. Mbano, <i>LLB, BL, LLM, Ph.D, ACIS</i> | - Member/Secretary to the Board      |

### 2. Group Management Team

- |  |  |
|--|--|
| i. Dr. E. E. Woherem, <i>Ph.D</i>                  | - Group Managing Director/ Chief Operating Officer                 |
| ii. Nominee of Technical Partners                  | - Snr Group Deputy Managing Director (Fin. Mgt., & Admin.)         |
| iii. Nominee of CLINDICK Group                     | - Snr Group Deputy Managing Director (O&S)                         |
| iv. Nominee of CLINDICK Group                      | - Group Deputy Managing Director ( Engrg, Tech; & Infrastructures) |
| v. Nominee of CLINDICK Group                       | - Group Deputy Managing Director (Agric & Food Security)           |
| vi. Nominee of CLINDICK Group                      | - Group Deputy Managing Director (Mktg & Business Dev.)            |
| vii. Nominee of Financial Partners                 | - Group Deputy Managing Director (Intellectual Infrast.)           |
| viii. Dr. (Mrs.) E.I. Okonkwo, <i>Ph.D</i>         | - Senior Group Executive/CUNL/COO                                  |
| ix. Prof. (Engr.) O.G. Okogbaa, <i>Ph.D,</i>       | - Senior Group Executive/CUNNCAL VC/CAO                            |
| x. Nominee of Financial Partners                   | - Senior Group Executive (Management Services)                     |
| xi. Nominee of Engr. & Tech. Partners              | - Senior Group Executive (Engineering & Infrastructures)           |
| xii. Nominee of CLINDICK Group                     | - Senior Group Executive (Industrial Development)                  |
| xiii. Nominee of CLINDICK Group                    | - Senior Group Executive (Investment & Estates)                    |
| xiv. Nominee of CLINDICK Group                     | - Senior Group Executive (Business Dev. & Marketing)               |
| xv. Nominee of CLINDICK Group                      | - Senior Group Executive (Administration)                          |
| xvi. Nominee of Federal Government                 | - Senior Group Executive (Food Security & Agriculture)             |
| xvii. Nominee of CLINDICK Group                    | - Group General Manager (Operations)                               |
| xviii. Nominee of CLINDICK Group                   | - Group Deputy General Manager (Zonal Operations)                  |
| xix. Nominee of CLINDICK Group                     | - Group Chief of Protocols   |
| xx. Mrs. E.A. Uranta, <i>M.Sc,</i>                 | - Group Executive ( <b>DAILY LABOUR</b> )                          |
| xxi. Prof. C.C Nwachukwu, <i>Ph.D</i>              | - Group Executive (CMAN)   |
| xxii. Dr. A.O. Adekunle, <i>Ph.D</i>               | - Group Executive (CCN)  |
| xxiii. Dr. J.A. Ombu, <i>Ph.D, FCA</i>             | - Group Executive (Finance)  |
| xxiv. Mr. B.C. Ibeh, <i>FCA, FCIA</i>              | - Group Executive (Investment)                                     |
| xxv. Engr. J. C Emerole, <i>B.Sc., COREN</i>       | - Group Executive (Manufacturing Ind. Subsidiaries)                |
| xxvi. Mr. A.M.B. Peterside, <i>B.Sc, M.Sc</i>      | - Group Chief Economist  |
| xxvii. Dr. (Mrs.) P.I. Mbano, <i>BL, LLM, Ph.D</i> | - Group Executive (Legal Services)                                 |
| xxviii. Engr. B.B. Fubara, <i>M.Sc, COREN</i>      | - Group Executive (ICT Infrastructures)                            |
| xxix. Dr. Adekunle Adekola, <i>Ph.D</i>            | - Group Executive (HR & MPD)                                       |
| xxx. Dr. (Engr.) I.J. Eyisi, <i>Ph.D, COREN</i>    | - Group Executive (Infrastructures Dev.)                           |
| xxxi. Mr. A.O. Nsitem, <i>B.Sc, MBA, FCIA</i>      | - Group Executive (Administration)                                 |
| xxxii. Dr. Ime Samuel Edem, <i>DVM, M.Sc</i>       | - Group Executive (Agric. Dev)                                     |
| xxxiii. Engr. Dickson Akamah, <i>COREN</i>         | - Group Executive (Power, Transm. & Distribution)                  |
| xxv. Capt. P.O. Nwaoze, <i>M.Sc, CPL</i>           | - Group Executive (Aviation Dev. & Training)                       |
| xxvi. Mr. L.H. Obomanu, <i>ACCA, ACMA,</i>         | - Group Executive (Internal Audit)                                 |

- xxvii. Mr. K.D. Uranta, *B.Sc, M.Sc*
  - xxviii. Dr. Lucky Uyigue, *Ph.D*  
Engr. S.M. Nwankwo, *M.Sc, COREN*
  - xxx. (Prof.) Engr. J. Amadi - Echendu, *Ph.D*
  - xxxi. Dr. (Engr.) J.A. Aguwamba, *Ph.D, COREN*
  - xxxii. Dr. (Engr.) G. Ezeokpube, *Ph.D, COREN*
  - xxxiii. Rtd. Cdr. (Barr.) G. Majekodunmi, *LLB, BL*
  - xxxiv. Engr. H.C. Pepple, *B.Sc, COREN*
  - xxxv. Prof. C.N. Mato, *MBBS, FWACS*
  - xxxvi. Vacant
  - xxxvii. Vacant
  - xxxviii. Vacant
  - xxxix. Vacant
  - xl. Vacant
- Group Executive ( Public Communications)
  - Group Executive (Comm. Industrial Subsidiaries)
  - Group Executive (Engineering)
  - Group Executive (Oil & Gas)
  - Group Executive (Marine Engineering )
  - Group Executive (Designs & Structures)
  - Group Executive (Security & Safety)
  - Group Executive (Lands & Environment)
  - Group Executive (Medical Services)
  - Group Executive (Lifestock Agriculture)
  - Group Executive ( Corporate Affairs)
  - Group Executive (Procurements)
  - Group Asst. General Managers (State Operations)
  - Senior Managers (LGA Operations)

## 8. CONTRIBUTIONS OF PPP- PARTNER GOVERNMENTS

### 1. Federal Government

- (i) Grant approval of the PPP scheme in Nigeria as proposed
- (ii) Grant 8,000 km x 75m wide Super High Way Right of Way/Access Routes across Nigeria
- (iii) Grant 15,000 km x 255m wide Skyway Transport Technology Track Right of Way/Access Routes across Nigeria
- (iv) Grant 10Km Deep Sea Shoreline within 500Ha in Akwa-Ibom, Bayelsa or Rivers State for Design & Construction of Sea Port, Quays & Anchorage, berthing 25 Cargo, Oil & Gas ships.
- (v) Grant waivers on all charges and corporate taxes for twenty-five (25) years

### 2. State Government

- (i) Grant 35,000 Ha of Land within 35 Km from the State Capital (either together or not more than three (3) sites separately) for integrated Industrial & Housing Estates, mechanized Agricultural and Lifestock Farms; and Industrial Plantations as follows:
- (ii) 10,000 Ha for Industrial Estate;
- (iii) 15,000 Ha for Agricultural and Lifestock Farms;
- (iv) 5,000 Ha for Housing Estate;
- (v) Certificate of Occupancy on the Lands
- (vi) 10,000 Ha Agricultural Industrial Plantations;
- (vii) Access Roads & Power Supply to Sites;
- (viii) Provide Security on and outside the Sites;
- (ix) 5,000 Graduates for training and employment;
- (x) State Office Accommodation;
- (xi) 1 Acre of Land for Zonal Operation Headquarters;
- (xii) Grant right of access on roads and sky transport technology route that may be routed through the State;
- (xiii) Grant waiver on all charges and corporate taxes for twenty five (25) years;

### **3. Federal Capital Territory**

- (i) 2 Hectare of Land for Corporate Headquarters in FCT
- (ii) Grant 35,000 Ha of Land within 35 Km from the City centre( either together or not more than three (3) sites separately)for integrated Industrial & Housing Estates, mechanized Agricultural and Livestock Farms; and Industrial Plantations as follows:
  - (iii) 10,000 Ha for Industrial Estate;
  - (iv) 15,000 Ha for Agricultural and Livestock Farms;
  - (v) 5,000 Ha for Housing Estate;
  - (vi) Certificate of Occupancy on the Lands
  - (vii) 10,000 Ha Agricultural Industrial Plantations;
  - (viii) Access Roads & Power Supply to Sites;
  - (ix) Provide Security on and outside the Sites;
  - (x) 5,000 Graduates for training and employment;
  - (xi) State Office Accommodation;
  - (xii) 1 Acre of Land for Zonal Operation Headquarters
  - (xiii) Grant right of access on roads and sky transport technology route that may pass in the State;
  - (xiv) Grant waiver on all charges and corporate taxes for twenty five (25) years;

### **4. Local Government**

- i. 2 Ha of Land for 100 Beds Standard Hospital;
- ii. 2 Acres of Land each in 25 Communities for 5,000 Ltrs. of Daily portable Water Scheme;
- iii. 10 Ha of Land for 100 units of urban housing scheme in LGA Hqtrs;
- iv. 10 Ha of land for fish and Life stock farms within the LGA Hqtrs;
- v. Certificate of Right of Occupancy to the Sites;
- vi. 500 Graduates for training and employment;
- vii. Provide Security on and outside the Sites;
- viii. Provide LGA Office Accommodation ( 6 BDR Bungalow)
- ix. Grant waivers on all applicable Corporate taxes and charges for twenty five (25) years;
- x. Acquire and pay for all unsold housing units in the LGA after ten (10) years;

### **5. Equity Shares Structure**

- |                          |                                 |
|--------------------------|---------------------------------|
| a. Federal Government    | 100 Billion Ordinary Shares     |
| b. Each State Government | 2.77 Billion Ordinary Shares    |
| c. Each Local Government | 129.198 Million Ordinary Shares |

### **6. Share Capital Structure**

- |                                 |                     |
|---------------------------------|---------------------|
| i. Federal Government           | \$ 2 Billion USD    |
| ii. Each State Government       | \$55.55 Million USD |
| iii. Each Local Government Area | \$2.583 Million USD |

## 9. PROJECT CONTRACTS EXECUTION TIMELINES

### 1. Description of Works

- i. 8000Km of Super High Ways: 25 Contractors @ 200 Km each in 5 years.
- ii. 25,000 Km of SWTTS Tracks: 100 Contractors @ 250Km each in 5 years.
- iii. 200 Moribund Factories Revitalization: 100 Contractors @ 2 Factories each in 2yrs.
- iv. 4,017 Integrated Agric &Lifestock Farms: 200 Contractors @ 20 Farms each in 3yrs.
- v. 37 Integrated Industrial Estates: 185 Contractors @ 5 Contractors each in 3year.
- vi. 37 Integrated Housing Estates (States): 37 contractors @ 1 Contractor each in 5 years.
- vii. 37 Agricultural Industrial Plantations: 37 Contractor @ 1 Contractor each in 2 years.
- viii. 774 x 100 Beds Hospital & Equipment: 37 Contractors @ 1 State each in 5 years.
- ix. 774 x 125,000 Ltrs. Rural Water Scheme: 37 Contractors @ 1 State each in 3 years.
- x. 774 x 10 Ha Fish & Life stock Farms: 37 Contractors @ 1 State each in 3 years.
- xi. 774 x 100 Units X 10 Ha Housing Estates: 37 Contractors @ 1 State each in 5 years.
- xii. 110 Cattle Ranches of 5000 heads each: 38 Contractors @ 1State each in 2 years.
- xiii. 20 x 700 Boeing x 777 Series Airliner: 1 contractor's Contract for 2 years.
- xiv. 10 Km x 50,000 Ha Seaport, Quays & Anchorage: 1 Contractor's Contract in 5 years.
- xv. 1000,000 MW Electric Power Generation for 22 Stations: 6 Contractors @ 1 Per Zone in 5yrs.
- xvi. 100,000 MW Electric Power Transmission: 6 Contractors @ 1 Per Zone in 5 years.
- xvii. 100,000 MW Electric Power Distribution: 6 Contractors @ 1 Per Zone in 5 years.
- xviii. Corporate Headquarters & Zonal Offices: 7 Contractors @ 1 Per Zone in 3 years.

### 2. Proposed and On-going Projects

- (i) Construction, development, equipment and finance of *Clinton University of Nigeria* Calabar (CUNNCAL) in 6 geopolitical and 5 city campuses across Nigeria.
- (ii) Finance and equipment of 12 Federal Universities and 7 University Teaching Hospitals across Nigeria.
- (iii) Finance, construction and equipment of 774x100 Beds each standard Hospitals in all Local Governments in Nigeria.
- (iv) Funding and development of 26,500 units of Large, medium and small scale industries and businesses to industrialize the Country, grow the economy and create jobs.
- (v) Finance, construction and management of 100,000 MW of electric power supply in 22 Power Stations to ensure uninterrupted power supply, boost industrialization, grow the economy and support jobs creation in Nigeria.
- (vi) Funding and construction of national transport schemes by Land, Air and Sea transportation systems in Nigeria.
- (vii) Funding and development of 11.17 million crop farms, Industrial plantations & Livestock Farms to boost agriculture and guarantee food security across Nigeria.
- (viii) Financing and set up of 10 Commercial, Merchant and Mortgage Banks to support businesses, financing, housing finance, grow and support the economy.
- (ix) Funding and construction of 5.66 million units of medium & low-income houses to provide affordable housing units across Nigeria.
- (x) Construction and funding development of Roads Infrastructure with 8,000 km of Super High Ways connecting all geopolitical zones and FCT in Nigeria.
- (xi) Funding and development of 1billion ltrs. and distribution of daily water supply to 20,000 communities and villages across Nigeria.
- (xii) Funding and development of two (2) companies of 75 million GSM and 75 million fixed wireless telephone lines to boost and drive national tele-communications, business, commerce and industry in Nigeria.
- (xiii) Financing and establishment of a global TV network, arts & tourism development academies, and revitalization of National Parks, Tourist Centres and attractions in Nigeria. (The TV station and its broadcast services will serve as Nigeria's own version of CNN, Atlanta, USA).

# 10. CLINDICK Inter - Resources Limited

## INTRODUCTION

CLINDICK Inter-Resources Limited is a private company registered on September 7, 1989 with registration No. 710723 to carry on among others business as General Contractors, Importers, Exporters and Consultants.

Following the need for business diversification and expansions; and the need to satisfy statutory legal requirements, the Company was formally incorporated in November 2006 to carry on business as:

- (i) Investors & Capital Sourcing Consultants;
- (ii) Management Consultants,
- (iii) Publishers,
- (iv) Real Estate Developers,
- (v) Builders,
- (vi) BoT & PPP Development Investors,
- (vii) Tertiary Education Entrepreneurs;
- (viii) Garments Production, Clothing and Laundry Services.

Nevertheless, the Company began operations in 1990 concentrating mainly on general small scale contracts, Publishing, Management Consulting, Training, Garmenting, Clothing, Laundry Services and Specialized Projects developments. To date, the Company is one of the leading and the most sought-after HRM, Industrial Relations and Training Consulting firms within the trade union movement in Nigeria. It is the lead Subsidiary company of CLINDICK Group NIGERIA.

The Company by reason of its business specialization operates under four distinct and broad divisions, viz:

- (i) Specialized Projects Development (SPD) Division;
- (ii) Building Construction and Estate Development (BC&ED) Division;
- (iii) Management Consulting and Training (MCT) Division;
- (iv) Printing and Publishing Department (PPD); and
- (v) General Services Division.

## (ii) Management Structure

The Company operates under a consolidated management team headed by the Managing Director. Each division is manned by a seasoned professional and actively supported by well qualified staff to ensure delivery of the highest standard of services to our ever-growing clientele.

Our corporate philosophy and vision are built around people, service and profit as the cornerstone of our continuous growth and sustained corporate integrity. In today's competitive business world, we have focused even more on improving efficiency and profitability. We do this by striving simultaneously to improve service quality, while reducing management cost and quickening projects development and completion cycle to shortest time possible. We believe this is best achieved in relatively specialized compact skilled and decentralized grouping.

Pursuant to these, and in order to eliminate inter-disciplinary barriers, an integrated projects supervision team is created. Outsourcing is a key element in our strategic management policy. This is done through strategic alliance and co-operation with our Financiers, Creditors and Strategic partners when it becomes necessary.

## 11. **DAILY LABOUR Publications Limited**

### **Introduction**

**DAILY LABOUR** Publications Limited is the second member and subsidiary of CLINDICK Group NIGERIA. It is the owner and publishers of **DAILY LABOUR** Newspaper, **LABOUR WEEK** and **LABOUR TIMES** News Magazines across Nigeria since 1995.

**DAILY LABOUR** Newspaper maintains a strong slant on labour and industrial relations news and stories in Nigeria. It has been the darling medium of labour, trade union and industrial relations news and prides itself as the authentic and most refreshing medium ever in Nigeria.

company is also engaged in general commercial printing, publishing of books, periodicals and general stationary. The company has a wide range of clientele in oil and gas industry, tertiary education, manufacturing and industrial sector, banking and finance sector, as well as in public and diplomatic services among others.

The company is headed by Mrs. Rachel Iyaola and is located in Ikeja Lagos and reporting to the group's executive management board.

(RC1300697)

## 12. **CLINDICK Management Academy NIGERIA**

### **Introduction**

CLINDICK Management Academy NIGERIA (CMAN) is a civic obligation primarily embedded in love of the nation in the pursuit for academic excellence, professionalism and commitment to knowledge development in the nation's quest for sound and total managers' education and trainings.

The Academy was the training division of CLINDICK Consulting NIGERIA which was registered in 1989. However, for diversification and expansion purposes, it was incorporated in 2000 to undertake research and general management science education, trainings and manpower development in Nigeria among others.

CLINDICK Management Academy NIGERIA (CMAN) is designed as an off-campus private tertiary institution set up exclusively by CLINDICK GROUP NIGERIA and partners to collaborate with Federal, States and foreign Universities, and relevant professional bodies and institutions to offer academic and professional courses and trainings in general management science education, and in related and complimentary fields of law, ICT, Economics, Management, International Relations, Political science, Business Administration, Computer science, Accountancy, Public Administration and Media Communications with strong management flavours.

In an off-campus mobile study scheme, the Academy admits, register and prepares eligible candidates through structured course of studies which incorporate approved JAMB and NUC standards and current course content of leading local and foreign collaborating Universities and Institutions.

This will lead to semester, sessional and final examinations, courses validation and the award of professionally accredited and internationally recognized Certificates, Diplomas, Bachelors and Masters Degrees by the Academy, and collaborating major Nigerian and foreign universities and other tertiary institutions. CMAN is a subsidiary of CLINDICK Group NIGERIA

# 13. National Infrastructures Development Company of Nigeria (NIDC) Limited

## Introduction

This is the newest and flagship of CLINDICK Group NIGERIA. It is a multi Billion Dollar multipurpose vehicle organization. It is currently undergoing registration and licensing formalities with the Federal Government of Nigeria.

NIDC is deliberately established as a purpose investment to drive the Public Private Partnership (PPP) initiative scheme with the Federal Government of Nigeria on infrastructure, industrialization, Food security, agriculture and social economic development of the Country.

It is a subsidiary of CLINDICK Group NIGERIA with an equity structure of:

1. CLINDICK Group NIGERIA	-70%;
2. Public Interest	-15%;
3. Fed., States & LGAs	- 15%.
4. Total	100%

NIDC is a Multi Purpose Vehicle (MPV) company with sixty five (65) subsidiaries, which organizationally are associate companies of CLINDICK Group NIGERIA.

The Company is designed and specially intended to manage and execute the PPP Agreement and programmes between CLINDICK Group NIGERIA and the Federal, States and Local Governments in Nigeria for fifty (50) years.

The investment by CLINDICK Group NIGERIA of \$50 Billion USD in the PPP will come with a 10 -year finance and development time frame in a five-year moratorium period. It is the single largest private investment in Nigeria since independence in 1960.

The Company has a 10 - member board drawn from the promoters, financial and technical partners, government and share holders, with headquarters in Abuja and its subsidiaries and operations in all state capitals, local government headquarters and 20,000 communities in Nigeria for a national effect and presence of services.

The company and it's subsidiaries are structured to launch Nigeria into the fourth global industrial revolution of the century via agriculture, industrialization, tertiary education, banking and finance; land, sea and air transportation; petroleum refining, housing, broadcasting, tourism and entertainment.

Under a consolidated group management board, the company will provide 90 million direct and indirect pensionable jobs in Nigeria within 10 years and admit 5 million undergraduate, graduate and postgraduate students in it's subsidiary Universities across Nigeria.

NIDC is the answer to the clarion call for national industrialization, good portable water and electric power supply; roads, air and Sea transportation; food security and agriculture; stable tertiary education, housing, health, economic growth and development through micro business financing, job creation and employment of Nigerians to fight hunger and disease in the land.

## **2. PPP PROJECTS WITH THE FEDERAL GOVERNMENT**

### **i. Education**

- (a) Ongoing development of 11 Private University campuses of Clinton University of Nigeria, Calabar
- (b) Equipment of 12 Federal Universities to International Standards

### **ii. Health**

- (a) Build & Equip 774 x 100 Beds each Hospitals in all LGAs in Nigeria
- (b) Equipment of Seven (7) Federal University Teaching Hospitals in Nigeria.

### **iii. Agriculture**

- (a) Cultivation of 5million Ha for sustainable and mechanized agriculture. All seasons commercial integrated agriculture across Nigeria.
- (b) 370 x 1000 Ha each Agricultural Industrial Plantations in Nigeria

### **iv. Tourism, Arts & Entertainment**

- (a) Building & Equipment of National Academy of Arts and Entertainment
- (b) Build & Equip 37 Tourist Centres & National Parks across Nigeria

### **iv. Water Supply In Nigeria**

- One Billion Ltrs. of portable water daily & reticulation of 50,000 Ltrs per day to each of 20,000 communities each across Nigeria.

### **v. Industry & Re-Industrialization of Nigeria**

- (a) Rehabilitation of 200 Private Moribund Industries and factories in Nigeria
- (b) Development of 16 Industrial Estates of 14,000 Ha each across Nigeria
- (c) Establishment of 300 Large factories of different product Lines in Nigeria
- (d) Establishment of 500 Medium Scale Industries and Factories on 20 Ha each in Nigeria.
- (e) Establishment of 25,000 Small Scale Industries and Businesses in Nigeria
- (f) Development of 2 Refineries in Nigeria (Refining 1/M Barrels of crude oil daily)

### **vi. Road Infrastructure In Nigeria**

- Construction of 5,000 Km of Super High Ways in six (6) geo-political zones

### **Vii. Aviation**

- Float a regional airline with 25 Boeing 777 – 700 Series Aircrafts to boost and sustain air travel and Transportation in Nigeria.

### **viii. 22`Power Stations of 100, 000 MW of Electricity Generation, Transm&Distrib**

- i. South West - 20,000 MW in four (4) power stations @ Ibadan, Abeokuta, Akure & Lagos
- ii. South South - 20,000, MW in four (4) power stations @ Benin, PH, Calabar & Uyo
- iii. North West - 18,000 MW in four (4) power stations @ Sokoto, Kano, Kaduna/Kastina
- vi. North Central - 12,000 MW in three (3) power stations @ Jos, Makurdi & Lokoja
- v. North East - 12,000 MW in three (3) power station @ Gombe, Maiduguri & Bauchi
- vi. South East - 13,000 MW in three (3) power stations @ Aba, Enugu & Awka
- vii. Federal Capital Territory – 5,000 MW in one (1) Power Station @ Abuja

**xi. Telecommunications**

- (i) 75 Million GSM Lines
- (ii) 75 Million Fixed Wireless Lines

**x. Banking, Finance, Insurance & Pensions**

- A Pension Fund Custodian with branches in all Geo-political zones and the FCT
- A Commercial Bank with nationwide branch network
- A Merchant Bank with branches in all State Capitals & FCT
- An Industrial Bank with branches in all State Capitals & FCT
- An Investment Bank with branches in all State Capitals & FCT
- An Insurance Company with branches in all State Capitals & FCT
- A Reinsurance Company with branches in all State Capitals & FCT
- A Pension Fund Administrator with branches in all State Capitals & FCT

**xi. Electronic Broadcasting**

- Establish the Greater Nigeria International Television Network (GNTV)

**xii. National Housing Development**

- 5.6 million Units of affordable Housing scheme across Nigeria

**7. PPP PROJECTS' MANAGEMENT FRAME WORK**

**(i). The Project Secretariat**

- The Project secretariat will be provided by the Federal Government in Abuja.
- The Federal Government shall also provide security, transport, furnish and equip the Secretariat Offices.
- CLINDICK shall maintain, manage and bear all administrative and management expenses including staff salaries and allowances of the Secretariat; and the day to day operational cost of the Project Secretariat.
- CLINDICK shall fully finance and pay for all projects, work and services of the PPP Programme in Nigeria.

**(ii). The Project's Technical Board**

- |   |   |                  |
|---|---|------------------|
| (a) CLINDICK Group NIGERIA                                | - | Chairman         |
| (b) CLINDICK Group's Engineering Partner                  | - | Member           |
| (c) CLINDICK Group's Technology Partner                   | - | Member           |
| (d) CLINDICK Group's Financial Partners                   | - | Member           |
| (e) Federal Government of Nigeria Rep. by ICRC            | - | Member           |
| (f) National Economic Council (NEC)                       | - | Member           |
| (g) State Govts Rep. by Nigeria Governors' Forum (NGF)    | - | Member           |
| (h) LGAs Rep. by Assoc. of Local Govts of Nigeria (ALGON) | - | Member           |
| (i) MAN (Stakeholders)                                    | - | Member           |
| (j) NACCIMA (Stakeholders)                                | - | Member           |
| (k) CBN (Funding Custodian Agency)                        | - | Member           |
| (l) Organized Private Sector (OPS) (Stakeholders)         | - | Member           |
| (m) Private Placement/Public Offers Shareholders          | - | Member/Secretary |

**(iii). PPP General Technical Adhoc Committee**

For the purpose of good technical imputes from specialized Government Agencies to develop an acceptable and realistic execution framework on the PPP management and its projects concepts, designs and integration or alignment to national social and infrastructure needs; physical development and economic recovery of the Nation, representatives of the Federal Government will be drawn from the under listed Federal Government Ministries and Agencies to Constitute an Advisory Technical Committee on the programme.

The Committee shall meet monthly at the Secretariat to make imputes and offer professional and technical advises on the various projects of the programme relating to Federal Government Policies on each in terms of quality and policy. It shall also monitor progress on the impute requirements of every Ministry, Agency or Parastatals that may be involved in the project implementation agenda. The General Committee may create Sub-Committees as the need arises.

The relevant Agencies, Parastatals and Ministries so far identified for inclusion and co-operation on the Programme implementation are:

7. National Economic Council
8. Office of Secretary to Government of the Federation
9. Office of Surveyor-General of the Federation
10. Infrastructure Corporation of Nigeria (Infracorp)
11. Infrastructure Concession & Regulatory Commission (ICRC)
12. National Universities' Commission (NUC)
13. Federal Ministry of Justice
14. Federal Ministry of Industry, Trade & Investment
15. Federal Ministry of Housing & Urban Development
16. Federal Ministry of Environment
17. Federal Ministry of Works
18. Federal Ministry of Transportation
19. Federal Ministry of Power
20. Federal Ministry of Communication & Digital Economy
21. Federal Ministry of Internal Affairs
22. Federal Ministry of Water Resources
23. Federal Ministry of Agriculture
24. Federal Ministry of Health
25. Federal Ministry of Education
26. Federal Ministry of Federal Capital Territory.
27. Federal Ministry of Aviation
28. Federal Ministry of Police Affairs
29. Federal Ministry of Petroleum Resources
30. Federal Ministry of Finance, Budget and Planning
31. Central Bank of Nigeria (CBN)
32. Nigeria Midstream & Downstream Regulatory Authority
33. NIMASA, NPA, NIITA, NSE, SEC, FBS
34. Nigeria Shippers Council
35. FCDA, FFS, FIRS, CAC, NIA, DSS, NAF, DAC
36. NCAA, FAAN, NERC, NOA, NCC, BON

37. PSC, EFCC, ICPC, NDLEA, NPA, SON
38. NIS, NCS, NA, NN, NAF, FRSC, NSCDC, etc.

***(a) Proposed Shares Structure***

- |                                    |                            |
|------------------------------------|----------------------------|
| • CLINDICK & Partners              | 70% or 1.3 Trillion Shares |
| • Proposed Public Offer            | 15% or 400 Billion Shares  |
| • Federal Government of Nigeria    | 5% or 100 Billion Shares   |
| • All State Governments in Nigeria | 5% or 100 Billion Shares   |
| • All Local Governments in Nigeria | 5% or 100 Billion Shares   |

***(b) Equity Capital Structure***

- |                                      |                                |
|--------------------------------------|--------------------------------|
| i. CLINDICK Group NIGERIA & Partners | - 70% or ₦36.75Trillion        |
| ii. Proposed Public Offer            | - 15% or ₦7.875Trillion        |
| iii. Federal Government of Nigeria   | - 5% or ₦2.625Trillion         |
| iv. All State Governments in Nigeria | - 5% or ₦2.625Trillion         |
| v. All Local Governments in Nigeria  | - 5% or ₦2.625Trillion         |
| vi. <b>Total</b>                     | <b>- 100% or ₦52.5Trillion</b> |

***(c) Proposed Subsidiary Companies of NIDC***

***A. Services Subsidiaries***

- i. *Clinton University of Nigeria Limited (Incorporated & Functional)*
- ii. *National Health Development Company Limited*
- iii. *Tourism, Development Company Limited*
- iv. *Sky Power Airways Nigeria Limited*
- v. *Clinton Bank of Nigeria Limited*
- vi. *Clinton Investment Bank Nigeria Limited*
- vii. *Clinton Mortgage Bank Nigeria Limited*
- viii. *Clinton Merchant Bank Nigeria Limited*
- ix. *Industrial Reinsurance Company Limited*
- x. *Industrial Pension Funds Limited*
- xi. *Industrial Custodian Funds Limited*
- xii. *CUNN Television & Radio Stations Limited*
- xiii. *Clinton Insurance Company of Nigeria Limited*
- xiv. *NIDC Export Marketing and Promotion Company Limited*

***B. Agriculture & Food Security Subsidiaries***

- i. *National Agriculture Development Company Limited*
- ii. *National Agricultural Industrial Plantations Limited*
- iii. *National Dairy & Milk Manufacturing Limited*

***C. Manufacturing Subsidiaries***

- i. *Abia Flour Mills Limited*
- ii. *Ibom Animal Feed Mills Limited*
- iii. *Abia Motor Manufacturing and Spare parts Limited*
- iv. *Opobo Out Board Engine Manufacturing and spare parts Limited*
- v. *Gombe Motor Accessories Manufacturing Limited*
- vi. *Port-Hacourt Tyres Manufacturing Limited*
- vii. *Abuja Aeroplane Manufacturing, Assembly & spare parts Limited*

- viii. *Ibom Ship Building & spare parts Plants Limited*
- ix. *Makurdi Heavy Equipment Manufacturing Limited*
- x. *Katsina Steel Plates and Iron Manufacturing Limited*
- xi. *Katsina Electrical Wire and Cable Manufacturing Limited*
- xii. *Sokoto PVC Pipes Manufacturing & Accessories Limited*
- xiii. *Port-Hacourt Textile Mills Limited*
- xiv. *Benin Roads Construction Equipment Manufacturing Limited*
- xv. *Clinton Computer Manufacturing & Spare parts Limited*
- xvi. *Eket Electronics Manufacturing & spare Parts Limited*
- xvii. *Ogun Mobile Phones Manufacturing and spare parts Limited*
- xviii. *CUNN Pharmaceutical and Drugs Manufacturing Limited*
- xix. *Ogun Chemicals Processing & Manufacturing Limited*
- xx. *Uyo Rubber Processing & Plastic Manufacturing Limited*
- xxi. *Calabar Cement Manufacturing Limited*
- xxii. *Calabar Aluminum Sheets, Profiles & Roofing Tiles Factories Limited*
- xxiii. *CUNN Paper Mills & Factories Limited*
- xxiv. *Jos Leather Processing & Manufacturing Factories*
- xxv. *Jos Tools & Equipment Manufacturing Limited*
- xxvi. *Sokoto Nails Manufacturing Factories Limited*
- xxvii. *Gombe Hygienic Products Manufacturing Factories Limited*
- xxviii. *Sokoto Woods Processing & Furniture Manufacturing Factories Limited*
- xxix. *Gombe Fertilizer Manufacturing & Blending Factories Limited*
- xxx. *Clinton Petrochemicals Manufacturing & Blending Factories Limited*
- xxxi. *NIDC Bitumen Processing & Manufacturing Plants Limited*
- xxxii. *Bayelsa Industrial Gas Blending Plants Limited*
- xxxiii. *Bayelsa Household Goods Manufacturing & Equipment Limited*
- xxxiv. *Delta Agricultural Equipment Manufacturing Limited*
- xxxv. *NIDC Prepaid Meter Manufacturing Limited*
- xxxvi. *Delta Burnt Bricks & Concrete Block Moulding Factories Limited*

**D. Engineering, Construction & Supply Subsidiaries**

- i. *Infrastructure Engineering & Construction Company Limited*
- ii. *National Housing Development Company Limited*
- iii. *Power Generation Company of Nigeria (PGCN) Limited*
- iv. *Power Transmission Company of Nigeria Limited*
- v. *Power Distribution Company of Nigeria Limited*
- vi. *National Water Resources Development Company Limited*
- vii. *National Industrialization Development Company Limited*
- viii. *Energy and Gas Refining Company Nigeria Limited*
- ix. *Sea Port & Quays Development Company Limited*
- x. *NIDC Telecommunications Development Limited*
- xi. *Skyway Transport Technology Nigeria Limited*
- xii. *National Roads Development Company Limited*

# 14. CLINTON UNIVERSITY NIGERIA LIMITED

## Introduction

Clinton University Nigeria Limited (CUNL) is a subsidiary company of CLINDICK Group NIGERIA. The company was incorporated in 2017, and specifically charged as the owner and Chief corporate promoter of Clinton University of Nigeria, Calabar (CUNNCAL).

The company is investing over N7 trillion in the ongoing development of CUNNCAL and its twenty five (25) subsidiaries in Calabar and eleven (11) geopolitical and city campuses across the Federal Republic of Nigeria.

The company's management is headed by Dr (Mrs.) E. I. Okonkwo as the Senior Vice President and Chief Operating Officer. She is designated Senior Group Executive Director incharge of CUNL Investments (SGED) in the Group Executive Management team.

She sits at the group corporate headquarters as the investor and manager of CUNNCAL, and its non academic and other business assets, and reporting to the Group Managing Director and Chief Operating Officer of CLINDICK Group NIGERIA.

The company's board of directors' and senior management team members are:

## 2.Board of Directors

- |                                |   |                     |
|--------------------------------|---|---------------------|
| i. Mr . C. D.Uranta            | - | Founder/President   |
| ii. Dr. (Mrs.) E.I. Okonkwo    | - | Snr. Vice President |
| iii. Dr. (Mrs.) P. I. Mbano    | - | Director            |
| iv. Mr. Desmond O. Uranta      | - | Director            |
| v. Mrs. E.A. Uranta            | - | Director            |
| vi. Alabo (Prof) S.J.S. Cookey | - | Director            |
| vii. Dr. A.O. Uwalaka          | - | Director            |

## 3.Management Team

- |                             |   |   |
|-----------------------------|---|---|
| 1. Dr. (Mrs.) E.I. Okonkwo  | - | Snr. Vice President/Chief Operating Officer |
| 2. Mr. K.D. Uranta          | - | Director, Corporate Affairs                 |
| 3. Mr. V.D. Coker           | - | Director, Investment & Assets Management    |
| 4. Dr. Adekola Adekunle     | - | Director, Manpower Trg. & Dev.              |
| 5. Mr. Ben C. Ibeh          | - | Director, Career Development Services       |
| 6. Dr. S. I. Edem           | - | Director, Agric Dev. Services               |
| 8. Barr. Uche Uhie          | - | Director, Legal Services                    |
| 9. Engr. Dickson Akamah     | - | Head, Power Generation &Transmission        |
| 10. Barr. OzurumbaNsirim    | - | Head, Legal & Management Services           |
| 11. Mr. A. M. B. Peterside  | - | Head, Business, Brand & Marketing Dev.      |
| 12. Engr. Amos Bombis       | - | Head, Transport & Logistics                 |
| 13. Mr. Samuel Ikona        | - | Head, Govt. & Community Relations           |
| 14. Mr. T.A.B. Keme         | - | Head Administration                         |
| 15. Mr. P.O. Obah           | - | Chief Accountant                            |
| 16. Engr. Felix Omoregie    | - | Head Mechanical Engineering                 |
| 17. Engr. Ben Patrick Igben | - | Head Sites Engineering                      |
| 18. Arch. Alphonsus Ntekop  | - | Head, Architecture & Designs                |
| 19. Surv. Henry UsoUso      | - | Head, Land Surveying                        |
| 20. Engr. Akai Jackson      | - | Head, Structural Engineering                |
| 21. Mr. Benjamin Jackson    | - | Head, Quantity Surveying                    |

#### **4. Subsidiary Companies**

- i. Clinton University Micro-Finance Bank Ltd
- ii. Clinton University Press & Publishing Co. Ltd
- iii. Clinton University Super Markets Limited
- iv. Clinton University Transport Services Limited
- v. Clinton University Staff Schools Limited
- vi. Clinton University Gas & Petrol Stations Limited
- vii. Clinton University Plastics & Packaging Co. Ltd
- viii. Clinton University Radio/ TV Stations Limited
- ix. Clinton University Bakery & Confectionaries Co. Ltd
- x. Clinton University Furniture & Furnishing Co. Ltd
- xi. Clinton University Animal Production & Food Processing Factory Ltd
- xii. Clinton University Bookshops Limited
- xiii. Clinton University Courier & Logistic Services Limited
- xiv. Clinton University Estates and Property Co. Limited
- xv. Clinton University Farm & Crops Co. Limited
- xvi. Clinton University Pharmacy Limited
- xvii. Clinton University Water Processing & Packaging Co. Ltd
- xviii. Clinton University Garment & Tailoring Services Limited
- xix. Clinton University Laundry & Dry Cleaning Services Limited
- xx. Clinton University Catering Services Limited
- xxi. Clinton University Tours & Travels Limited
- xxii. Clinton University Insurance Brokers Limited
- xxiii. Clinton University Industries Limited
- xxiv. Clinton University Investments Limited
- xxv. Clinton University Pharmaceutical & Allied Products Limited

## **15. CLINTON UNIVERSITY NIGERIA (CUNNCAL)**

### **Introduction**

*Clinton University of Nigeria, Calabar, Calabar, Nigeria (CUNNCAL)*; is a global brand institution - *a dedication to God for humanity*; and a response to the challenges of tertiary education in Nigeria, Africa and globally. This is an incorporated and integrated Conventional University-organization; and is currently processing its private University license in Nigeria with The National Universities' Commission (NUC) pursuant to the guidelines and regulations of the Commission.

CUNNCAL is strategically and deliberately designed to address for the first time in the Country tertiary education challenges in Nigeria with eleven (11) campuses in Akwa-Ibom and Rivers States, South-South, Nigeria; Imo State, South-East, Nigeria; Ogun State, South-West, Nigeria; Kano State, North-West, Nigeria; Gombe State, North-East, Nigeria; and FCT, North-Central, Nigeria.

*Clinton University of Nigeria, Calabar (CUNNCAL)* is a product of several years of research intended to address the challenges of inadequate and poor funding, educationally disadvantaged syndrome, poor infrastructures and dire lack of tertiary education admission spaces in Nigeria University system.

Guided by the guidelines for the establishment of Private Universities in Nigeria; Benchmark Minimum Academic Standards (BMAS) for undergraduate programmes in Nigerian Universities; and the Procedures Guide on Physical Development for the University System in Nigeria issued by the National Universities' Commission; the University Board made an intent on March 3, 2014, and a University License application on July 5, 2021 for the establishment of proposed *Clinton University of Nigeria [CUNN], Calabar, Nigeria* as a conventional (Planted Option) 4-components integrated University in Nigeria.

The four (4) integrated components of the proposed University are:

- (i) Academic Excellence and Teaching;
- (ii) Research and Development;
- (iii) Commerce and Industry;
- (iv) Food, Agriculture and Medicine.

## **2. International & Local Affiliations**

The University shall by the rules of engagement and pursuant to official guidelines and regulatory enactments have and shall be affiliated to the following sister and networking local and foreign Universities and educational institutions, viz:

- i. Clinton University, Arkansas, USA
- ii. Clinton University, California, USA
- iii. Clinton University, New York, USA
- iv. Clinton University, Malaysia
- v. Clinton University College, Dublin, England
- vi. Clinton University, Chicago, USA
- vii. Clinton University, Brazil
- viii. Clinton University, China
- ix. Clinton University, India
- x. Clinton University, Atlanta, USA
- xi. Clinton School of Public Service, USA
- xii. Clinton Global Initiative University, USA
- xiii. Oxford University, England
- xiv. Imperial College, London, England
- xv. University of Cambridge, England
- xvi. Harvard University, USA
- xvii. Massachusetts Inst. of Technology, USA
- xviii. California Inst. of Technology, USA
- xix. Princeton University, USA
- xx. University of Ibadan, Nigeria
- xxi. University of Nigeria, Nsukka, Nigeria
- xxii. University of Lagos, Akoka, Nigeria
- xxiii. Ahmadu Bello University, Zaria, Nigeria

## **3. Our Research Focus**

- i. Medicine
- ii. Engineering
- iii. Science
- iv. Technology
- v. Industry
- vi. Agriculture

## **4. Our Locations & Contacts**

### **i. The Main Campus**

The University City,  
Clinton University Expressway,  
Off Ikot Offiong-Ekang Road,  
Akwa Ikot Effanga Clan, Akpabuyo LGA,  
P.M.B. 1141, Calabar, Cross River State,  
South-South, Nigeria.  
Email: [cunn.edu@gmail.com](mailto:cunn.edu@gmail.com)  
Website: [www.cunncl.edu.ng](http://www.cunncl.edu.ng)  
Tel: +2349021118488

## **ii. Calabar Campuses**

- (a) Engineering, Science & Technology City,
- (b) Clinton University Express Road, Ebisa Junction,  
Off Calabar-Ikang Road, Akpabuyo LGA,  
P.M.B. 1141, Calabar, Cross River State,  
South-South, Nigeria.  
Email: [cunn.edu@gmail.com](mailto:cunn.edu@gmail.com)  
Website: [www.cunn-cal.edu.ng](http://www.cunn-cal.edu.ng)

## **iii. Ibom Campuses**

- (a) Medicine, Medical & Health Sciences Campus, Uyo
- (b) Industry & Agric Research Campus, Eket
- (c) Science and Technology Campus, Uquo, Esit- Eket  
P.M.B. 325, Eket, Akwa-Ibom State,  
South-South, Nigeria.  
Email: [cunn.edu@gmail.com](mailto:cunn.edu@gmail.com)  
Website: [www.cunn-cal.edu.ng](http://www.cunn-cal.edu.ng)

# **16. DESCRIPTIONS OF THE UNIVERSITY**

The University is a 5 million students global brand 4-components integrated multi-disciplinary (planted option) conventional world class institution; occupying a total land size of 80,696,128 Hectares in eleven (11) Main, geo-political and city campuses and centres, with its Main Campus at Calabar, Cross River State, Nigeria. The eleven (11) Campuses are in Opobo and Ogbakiri in Rivers State; Akko in Gombe State; Gwagwalada in Abuja FCT; Obafemi in Ogun State; Uyo, Esit-Eket and Uquo in Akwa-Ibom State, South-South, Nigeria. The North East Campus is in Akko, Gombe State; North West Campus is in Kano, Kano State; South East Campus is in Umuahia, Abia State, Nigeria. The main campus is located at The University City, Off Ikot Offiong-Ekang Road, Akwa Ikot Effanga Clan, Akpabuyo Local Government Area, Calabar, Cross River State. The University will have 25 networking and collaborating Institutes, Schools, Universities and Colleges in Nigeria, USA, Asia and Europe.

The University has a total of eleven (11) campuses and centres in Nigeria. The main Campus is on 34,696 Ha; Gombe Campus 20,000 Ha; Abuja Campus 5,000 Ha; Umuahia Campus 5000 Ha; Port-Harcourt Campus 5,000 Ha; Abeokuta Campus 5,000 Ha; and Ibom Campuses sitting on 1129 Hectares in Uyo and Esit-Eket Local Government Areas, Akwa-Ibom State, South-South, Nigeria. The designed combined population of the University is 5,000,000 students and 196,778 staff; sitting on a combined land size of 80,696 Ha.

## **1. Global Ranking Projections & Features**

The institution will be among the five (5) biggest universities in the world on enrolment; and in 25 years would be among the best twenty five (25) Universities in the world. It will offer 800 major and 400 minor programmes in diverse fields of specialization and human studies in 11 Campuses, 11 Academies, 28 Undergraduate and Pre-Degree and Postgraduate Colleges and Schools; 3 Graduate Colleges and Institutes; 3 Faculties and 780 departments.

The basic and teaching infrastructures of the University will include 7 Research Institutes, 6 Research Central Laboratories, Engineering & Technology workshops, an integrated 90MW Power supply (Hydro, Solar, GAS & PHCN options) system station. Others are 25,500 Ha integrated Agric Farms; 300 Beds Teaching Hospital, 5000 Ha study/Industrial Free Zone Complexes; 100 Ha Commercial Business Park; 500 Ha Standard Training Airport; a Training Seaport; 5 Merchant Navy Ships and Vessels; 5 Shuttle Train Service wagons and 2 Electric Engines heads, 25km Standard gauge Ring Rail Track and 2 Terminal and

Buildings and 5 stations Passenger Halls; Graduate, Postgraduate, and Post-Doctoral Colleges, and a model Business School among others.

The teaching infrastructures in the University further include 25,000 capacity Amphi- Theatre and 100,000 capacity Matriculation Ground; an integrated high frequency satellite radio and television (CUNN Radio/TV) stations; 60,000 capacity Stadium/Convocation Arena; 500 Ha wildlife park, 200mx25m wide aquatic lake; 4 Helicopter pads, 200km Double Deck Concrete walk ways, 50 Million Litres capacity water scheme; Magistrate, High, Appeal and Supreme Court (Demonstration) Court Rooms; Bank Buildings, LPG Gas Plants and Petrol Stations, 8 Trucks Fire Station, 5,000km Internal Access Roads and 50 Ha University Arcade, etc.

## **2. The Campuses, Social Life and Connectivity**

The University is designed to be self-sufficient on basic academic and social needs of students in terms of 26x25 storey (26 floors) each hostel high rise blocks and 7x25 storey (26 floors) each staff accommodation high rise blocks, Lecture halls, Research Theatres and Laboratories, Food, Pharmaceuticals, Health care, Electricity and Water Supply, General Security, ICT, Telecommunications, Transportation, Students and Staff Welfare, General Safety, Social Security and internal sourcing of 85% of the domestic official consumables of its administration and population among others.

The campuses will be connected on Wide Area (Internet) Network (WAN), Close Circuit Security Television (CCTV) Surveillance Cameras, Telecommunications, Digital Radio and Television Stations and an Integrated ICT Platform for Admissions, Management System, Virtual Learning, Online Studies and Global Affiliates collaboration network Information Management System (IMS).

Colleges of Foundation Education; Technical & Vocational Studies as well as Pre and Associate Degree Studies are the University's nurseries for grooming and screening of potential direct intakes into the regular pre-degree and undergraduate programmers. The Pre-Degree Colleges will start two (2) years ahead of undergraduate programmes with 25,000 pupils and students.

## **3. Commencement of Academic Activities**

On official commencement, the Institution will admit 200,000 students per session into 800 undergraduate programs in the first five (5) years or 1,000,000 regular students. Thereafter, the Part-time, Long Distance and Sandwich programs will commence with 200,000 admissions per session for five (5) years or 1,000,000 students. Furthermore, the Long Distance school global student's admission will begin in the fourth year with 200,000 admissions annually for five (5) years or 1,000,000 students. Similarly, the Graduate and Post Graduate Colleges will begin with 30,000 students in the sixth year from among the first and second batches of the University's 400,000 graduands in years four and five.

In the same vein, the Advance Research and Post-Doctoral College will open in the eighth year with 3,000 candidates drawn from among Masters and Doctorate graduates of the Graduate and Postgraduate Colleges. This will bring the University to its designed student's population of three (3) Million from both Part-time, Sandwich, Long Distance and regular undergraduate, Graduate, Postgraduate and Post Doctorate Colleges in ten (10) years.

## **4. Basic & Teaching Infrastructures**

The Institution is an equal opportunity organization, and will be governed by Confederate Management System (CMS) in three (3) integrated ways of General Business, Industry, Academics and Research on five (5) Campuses, 10 Academic and Management Directorates, 15 Sub-Directorates, 65Administrative and 15 Operation Divisions, 375 Non-Academic departments and over 250 crack sub-operation units.

The campuses are primarily designed as model Academic Cities with integrated functional services to boost living health, serene learning and academic and specialized knowledge developments in a hands-on entrepreneurial approach; crafted in contemporary academic curriculums of modern trends and current ground-breaking intellectual discoveries through Research, Development and Post-Doctoral cases and further studies.

We are coming soon; big, strong, reliable, sitting in Nigeria and dedicated to God for humanity to promote excellence and industry, touch lives globally in more ways than one, and committed to the pursuit of excellence and quality tertiary education as never before around the world. This is to make Nigeria the new global hub of deeper academic endeavors, through which her cure of endemic challenges of tertiary education admissions will come, and once again, qualified and desiring citizens of the Federal Republic shall secure placements in all fields of human study in order to expand, deepen, quicken and sustain the pace of our national development, and global economic competitions.

## **5. Our Vision**

- (i) To be among the best Universities in the world, promoting excellence and industry, touching lives globally through excellent and quality tertiary education as never before around the world;
- (ii) To make Nigeria the new global hub of deeper academic endeavors, through which the cure of her endemic challenges of tertiary education admissions would be realized;
- (iii) To pursue an excellent education investment policy which ensures that qualified and desiring citizens of the Federal Republic without discrimination secure admissions to pursue ambitions through study in all fields of human endeavor in order to expand, deepen, quicken and sustain the pace of national development; and ensure that in the nearest future a majority of the youths in the Country would be discouraged from engaging in criminal behavior.
- (iv) To generally contribute to knowledge development, and work in collaboration with major global Universities to further develop and domesticate current course contents and expand fields of studies through research and development to give desiring candidates alternative choices, additional platform, and opportunity of good quality tertiary education and trainings in the institution's chosen fields and courses.
- (v) And to be the leading Nigeria's multi-access educational institution; promoting interdisciplinary, entrepreneurial and applied management studies through social inclusion, technology, science, engineering, industry, agriculture and needs based approach for the good of man and country.

## **7. Our Mission**

- (i) To be the University brand of choice in quality research, infrastructure, facilities, global academic collaborations, Staff and Students exchange programmes;
- (ii) To revolutionize tertiary education in Nigeria through standards, and production of first grade middle and high level professionals who are tooled and equipped to support industrialization and national quest for global economic competition;
- (iii) To make CUNNCAL model a case study to sensitize and promote "Integrated Planted Option" University system in Nigeria and Africa;
- (iv) To pioneer ground breaking studies and development of new disciplines and careerization of key economic and socially viable and sustainable vocations via tertiary development and studies in Nigeria; and to be the first institution to make such breakthroughs in sub Saharan Africa;

- (i) And to path-find this mission in Nigeria; hold greater Knowledge development, promote career advancement opportunities, perfect and excellent innovative education plans, and social benefit potentials, through an engrained competitive edge in the University's creative training concepts, specialist programmes and course structures.

## 8 Our Objectives & Goals

- (i) To be a catalyst institution committed to revolutionizing the development and management of private University education in Nigeria with a view to progressively becoming a leading national, continental and global brand in all her courses and programmes; through the amelioration of infrastructural facilities deficit, responsible for lower admission intakes into Nigerian universities by providing same at higher quality standards, quantity and at most socially competitive fees.
- (ii) To pursue the revolution with higher intensity research into developing and sustaining of Africa's businesses, infrastructures and improvement of public institutions management on the continent to support and boost Africa's industrialization.
- (iii) To systematically through knowledge transfer, impact and leadership re-orientation, ensure that the over 85% of publicly funded institutions and infrastructure failures on African continent is reversed through a well-coordinated research using Nigeria as a case study.
- (iv) To academically build a conscious base through an expanded and integrated course structures and programmes that will develop and promote African Business Education and Environment (ABEE) contents; and to bridge the global knowledge gap, that Nigeria, and indeed Africa shall in two decades become a knowledge power house.
- (v.) And to structurally craft a university model that will through research and development promote and graduate first grade professionals, technologists and scientists in the low, middle and higher levels manpower base to support and boost the quest for industry, mines, agriculture and national industrialization in the Federal Republic of Nigeria.

## 9. Our Motto

*A dedication to God for Humanity- meaning that the University is an investment which is dedicated to God for the service of humanity by upholding dear to the fear of God and principles of equality, excellence and integrity in academics, research, industry and agriculture.*

## 10. Logo of the University

*The Logo of the University is represented by the following icons, and meaning:*

- i.Palm tree-** *Longevity, peace, growth, fertility and fruitfulness.*
- ii.The Dew-** *Harbinger of life, important truth & blessings to humanity.*
- iii.Keyboard-** *Representing important tool of communication, technology, research and development.*
- iv.The Pen-** *An embodiment of the desired degree of ceremony and prestige which the University represents and would uphold.*

- v. Open Book-** *To demystifying tertiary education of perceived mystery and concealment, to make it accessible and affordable as a fundamental social right in pursuance of national unity and development.*
- vi. Academic Hat-** *Represents the superiority and intelligence the University will pursue in her areas of focus.*
- vii. The Scroll-** *Symbolizes the translating of graduates work into meaningful communications and scholarly accomplishments.*

## 11. Our Colours& Justifications

The University is represented in five strong angelic colours of red, white, blue, cream and brown, and in the institution's colours philosophy are explained thus:

- i. Red** - *Interprets the envisioned visibility, strength, determination, desire and passions of the University.*
- ii. White-** *Means perfection, light, goodness, purity, virginity,successful beginning, wholeness and completeness of the University.*
- iii. Blue** - *Represents highest and lowest levels (the sky and sea), depth and stability, wisdom and confidence, tranquillity and the anticipated ambience and serenity that will be offered by the University choice locations.*
- iv. Cream-** *Is the colour which stands us out in neutrality, calmness and the relaxation in our commitment to pursuance of academic perfection and, or excellence.*
- v. Brown-** *Is our philosophical colour denoting reliability, security, wholesomeness, solid foundation, warmth, honesty and integrity.*

## 12. Anthem of The University

- (i) Clinton University of Nigeria, a global brand institution, piloting revolution in tertiary education in the third world; Dedicated to God for humanity; sitting in Nigeria and through academic excellence, touching the earth for the good of man and society.

*Chorus:*

*Arise O' Clinton University of Nigeria!*

*Arise O' CUNN!!*

*Arise O' CUNNCAL!!!*

- (ii) Be the global brand of first choice on our continent; be the second best and third largest University on enrollment; and in an equal opportunity and confederate management system, pursue academic equality devoid of discrimination, by race, religion, class or nationality.

*Chorus:*

*Arise O' Clinton University of Nigeria!*

*Arise O' CUNN!!*

*Arise O' CUNNCAL!!!*

- (iii) Promote social integration, global education and economic competition; engender certified skill and professional competencies of global marketability; and through it create and sustain, shared social security, progress, prosperity and happiness arising from committed academic excellence, that is rooted in robust engineering, science, technology, medicine, agriculture, social and industrial research for the good of humanity.

*Chorus:*

Arise O' Clinton University of Nigeria!  
 Arise O' CUNN!!  
 Arise O' CUNNCAL!!!

We stand in awe, global call obey.

## 17. TRUSTEES, COUNCIL & MANAGEMENT OF CUNNCAL

### 1. The University Executive Board

1. Mr. C.D. Uranta, MBMA, FCIA, FIMC	-	Founder / President & Chancellor
2. HE, Mr. Bill Clinton	-	Honorary Global Chancellor ( <i>Designate</i> )
3. HE, Dr. G.E. Jonathan, <i>GCFR</i>	-	Chancellor, Continent of Africa ( <i>Designate</i> )
4. Alabo (Lt. Gen.) K.T.J. Minimah, <i>CFR (Rtd)</i>	-	Council Chairman & Pro-Chancellor
5. Gen. T.Y. Danjuma, (Rtd.) <i>CFR</i>	-	Chairman, Board of Trustees ( <i>Designate</i> )
6. Dr. (Mrs). E. I. Okonkwo, Ph.D	-	Senior Vice President/Chief Operating Officer (CUNL)
7. Prof. O. G. Okogbaa, Ph.D	-	Vice Chancellor & Chief Academic Officer
8. Prof. C.C. Nwachukwu, Ph.D	-	Academic Advisor
9. Dr. (Mrs) I.P. Mbano, LLM, Ph.D	-	Advisor, Legal Matters
10. Dr. (Engr.) J. I. Eyisi, Ph.D, COREN	-	Member / Infrastructure Advisor
11. Dr. O. A. Uwalaka, Ph.D	-	Member / Registrar & Secretary to Council
12. Mr. A. F. Epelle, MBA, FCA	-	Member / Investment Advisor
13. Dr. E. E. Woherem, Ph.D	-	Member / ICT Advisor
14. Rt. Rev.(Dr.) H.C. Ndukuda, Ph.D	-	Member/Counsellor ( <i>Designate</i> )

### 2. The University Council

1. Alabo (Lt. Gen.) K.T.J. Minimah, <i>CFR (Rtd)</i>	-	Council Chairman & Pro-Chancellor
2. Prof. O. G. Okogbaa, Ph.D	-	Vice Chancellor/Vice Chairman
3. Dr. (Mrs) E. I. Okonkwo, Ph.D	-	Member/Senior Vice President
4. Dr. (Mrs.) I.P. Mbano, LLM, Ph.D	-	Member/Legal Adviser
5. Prof. C. C. Nwachukwu, Ph.D	-	Member/Academic Adviser
6. Mrs. E.A. Omoruyi, B.Sc, M.Sc, PGD	-	Member / Pre – Degree Adviser
7. 5 Principal Deputy Vice Chancellors	-	Members
8. 15 Snr. Deputy V.Cs / HoCs	-	Members
9. 35 DVCs/ Heads of Academies	-	Members
10. 70 Provosts of Colleges & AVGs	-	Members
11. Dr. O.A. Uwalaka, Ph.D	-	Registrar/Secretary to Council
12. Dr. J. A. Ombu, Ph.D, FCA	-	Bursar/Head, Directorate of Fin.&Accts.
13. Dr. C. J. Mkpuhin, Ph.D	-	Librarian/Head, Learning Resource Directorate
14. 100 Representative Deans in the University	-	Members
15. All Directors of Schools	-	Members
16. All Divisional Directors	-	Members

### 3. The Board Of Trustees

1. Gen. T.Y. Danjuma, CFR	-	Chairman ( <i>Designate</i> )
2. Mr. C.D. Uranta, MBMA, FCIA	-	Member
3. Prof. O.G. Okogbaa, Ph.D	-	Member
4. Dr. E.E. Woherem, Ph.D	-	Member
5. Prof. C.C. Nwachukwu, Ph.D	-	Member
6. Dr. (Mrs) E. I. Okonkwo, Ph.D	-	Member
7. Dr. (Engr.) J.I. Eyisi, Ph.D, COREN	-	Member
8. Barr. (Mrs) I.P. Mbano, LLM, Ph.D	-	Member
9. Barr. O.A. Nsirim, MBA, FCIA	-	Secretary
10. Vacant	-	Member/Rep. of Host Communities
11. Vacant	-	Member/Rep. of NUC
12. Vacant	-	Member/Rep. of National Universities' Commission

#### 4. The University Academic Board

1. The Vice Chancellor/Chief Academic Officer	- Chairman
2. Principal Deputy Vice Chancellor	- Alt. Chairman
3. 8 Senior Deputy Vice Chancellors	- Members
4. 15 Deputy Vice Chancellors	- Members
5. The University Librarian	- Member
6. 5 Principal Asst. Vice Chancellors	- Members
7. 10 Senior Asst. Vice Chancellors	- Members
8. 10 Asst. Vice Chancellors	- Members
9. The Registrar of the University	- Member
10. Senior Deputy Registrar (AE&C)	- Secretary
11. Deputy Registrar (CCD)	- Asst. Secretary
12. 10 Heads of Undergrad/Graduate Schools	- Members
13. 7 Heads of Institutes	- Members
14. 4 Heads of Professional Schools	- Members

#### 5. The University Management Team

1. Prof. O. G. Okogbaa, Ph.D, COREN	- Vice Chancellor/Chief Academic Officer
2. Prof. C.N. Mato, MBBS, FWACS	- PDVC (Medical & Health Sciences) ( <i>Designate</i> )
3. Prof. Juliet U. Elu, Ph.D	- PDVC, Foreign Campuses ( <i>Designate</i> )
4. Prof. J. Amadi –Echendu, Ph.D	- PDVC (Engrg. Sc & Tech) ( <i>Designate</i> )
5. Prof. J. A. Aguwamba, Ph.D,	- DVC (Academies of EST) ( <i>Designate</i> )
6. Dr. A. O. Uwalaka, Ph.D	- Registrar / Secretary to Council
7. Dr. J. A. Ombu, Ph.D, FCA	- Bursar/Head, Directorate of Fin.&Accts( <i>Designate</i> )
8. Dr. C. J. Mkpufin, Ph.D	- Librarian/Head, Learning Resource Directorate
9. Engr. S. M. Nwankwo, M.Sc, COREN	- AVC, Directorate of Engineering & Infrastructures
10. Dr. O. J. Ndubuisi, Ph.D	- Provost of College/Head of Strategic Directorate
11. Engr. (Dr) G. Ezeokpube, Ph.D, COREN	- Director, Designs/Infrastructures
12. Engr. B.B. Fubara,M.Sc, COREN	- Director, ICT Infrastructure
13. Mrs. E.A. Omoruyi, B.Sc, M.Sc, PGD	- Director, Protocols & International Relations
14. Capt. Paul O. Nwaoze, M.Sc, CPL	- Director, Sch. of Aviation & Aero. Sciences
15. Mr. L. H. Obomanu,ACCA, ACMA, FCA	- Director of Audit
16. Mr. E.M. Berege, B.Sc, MBA	- Head, Compliance Administration
17. Dr. Christopher Adah ,Ph.D	- Head, College of Foundation Education
18. Engr. H. C. Pepple, B,Sc, COREN	- Head, Health Safety & Environment
19. Barr. (Cdr.) G. Majekodunmi, LLB,BL	- Head, Security Services
20. Dr. U. I. Edem,B.Sc, MBBS	- Head, Medical & Health Services
21. Mr. D. M. Jaja,B.Sc, MBA	- Head, Corporate Communications
22. Engr. W. I. Menim,B.Sc, COREN	- Head, Civil Engineering
23. Engr. K.O. Akpuri,B.Sc, COREN	- Head, Electrical Engineering
24. Dr. AmekanEyoh,Ph.D	- Head, Environment & Land Survey
25. Engr. (Mrs.) ChilotaIwuoha, COREN	- Head, Civil Engineering (Roads)
26. Mr. Charles Mukoro,B.Sc, MBA	- Head, Administration
27. Barr. Margret Agbo,LLB, BL	- Secretary, Management Board
28. Arch. A.O. Okonkwo,B.Sc, M.Sc	- Head, Const. & Est. Development
29. Mrs. E. O. Ofurumah,B.Sc, MBA	- Head, Management Services
30. Mr. Emma Ekpenyong,B.Sc, MBA	- Head, Publications & Press

#### 6. Academic Advisors & Consultants

- i. Prof. Sola Fajana, B.Sc, M.Sc, Ph.D, FNIM, FNANM (ABU)
- ii. Prof. Benjamin Inyang, BA, MLIR, Ph.D, FCIM (UNICAL)
- iii. Prof. Joseph Udoanyang, B.sc, M.Sc, P h.D, FCA, FNIM(UNICAL)
- iv. Prof. S.A. Jaja, B.Sc, M.Sc, MBA, Ph.D, FNIM, FCIS(RUST)

- v. Dr. F.C. Anyim, B.Sc, M.Sc, Ph.D, FABE, FCIPM(UNILAG)
- vi. Prof. Ben. Oghujafor; B.Sc., M.Sc.,Ph.D, (DSUST)
- vii. Prof. J.E.Amadi-Echendu; B.Sc., M.Sc.,Ph.D, (University of Pretoria, SA)

## **7.The University Education Board**

- |   |   |                 |
|---|---|-----------------|
| 1. Provost (CPDS)                                   | - | Chairman        |
| 2. Provost, College of Foundation Education         | - | Vice - Chairman |
| 3. Principal, Staff Sec. School                     | - | Member          |
| 4. Principal, School of Voc. Studies                | - | Member          |
| 5. Principal, School of Tech. Studies               | - | Member          |
| 6. All Deputy & Vice Principals                     | - | Members         |
| 7. Head Teachers/Masters of Primary Schools         | - | Members         |
| 8. Asst. Registrar, College of Foundation Education | - | Secretary       |
| 9. Asst. Registrar, College of Pre-Degree Studies   | - | Asst. Secretary |
| 10. Bursars of Pre-Degree Colleges                  | - | Members         |
| 11. Librarians of Pre-Degree Colleges               | - | Members         |

# **18. CUNNCAL FOUNDATIONS & FUNDS**

## **1. Clinton University Foundation**

- |                            |   |               |
|----------------------------|---|---------------|
| 1. Mr. Clinton Uranta      | - | Chairman      |
| 2. Dr. (Mrs.) E.I. Okonkwo | - | Vice-Chairman |
| 3. Prof. O.G. Okogbaa      | - | Member        |
| 4. Dr. (Mrs.) I. P. Mbano  | - | Member        |
| 5. Mr. D.O. Uranta         | - | Member        |
| 6. Dr. A.O. Uwalaka        | - | Member        |

## **2. Clinton University Trust Fund**

- |                             |   |               |
|-----------------------------|---|---------------|
| 1. Dr. (Mrs.) E.I. Okonkwo  | - | ChairPerson   |
| 2. Engr. J.I. Eyisi         | - | Vice-Chairman |
| 3. Dr. E.E. Woherem         | - | Member        |
| 4. Mr. A.F. Epelle          | - | Member        |
| 5. Mr. D.O. Clinton         | - | Member        |
| 6. Mr. Clinton Dickson, U   | - | Member        |
| 7. Prof. O.G. Okogbaa       | - | Member        |
| 8. Deputy Registrar (Admin) | - | Secretary     |

## **3. Clinton University Research Fund**

- |                                |   |               |
|--------------------------------|---|---------------|
| 1. Prof. O.G. Okogbaa          | - | Chairman      |
| 2. Dr. (Mrs.) I. P. Mbano      | - | Vice-Chairman |
| 3. Prof. C.C. Nwachukwu        | - | Member        |
| 4. Mr. B.I. Ibeh               | - | Member        |
| 5. All Provost of Colleges/UTH | - | Members       |
| 6. Deputy Registrar            | - | Secretary     |

## **4. Host Community Projects' Fund**

- |                         |   |               |
|-------------------------|---|---------------|
| 1. Engr. H.C. Pepple    | - | Chairman      |
| 2. Engr. I.D. Balami    | - | Vice-Chairman |
| 3. Capt. P.O. Nwaoze    | - | Member        |
| 4. Engr. J.C. Emerole   | - | Member        |
| 5. Engr. S.M. Nwankwo   | - | Member        |
| 6. Engr. Daniel Okonkwo | - | Member        |

- |                             |   |           |
|-----------------------------|---|-----------|
| 7. Barr. E.I. Clinton       | - | Member    |
| 8. Deputy Registrar (Admin) | - | Secretary |

#### **5. Corporate Social Responsibility Project Fund**

- |                              |   |               |
|------------------------------|---|---------------|
| 1. HRH (Barr.) C.M. Edem Udo | - | Chairman      |
| 2. Engr. S.M. Nwankwo        | - | Vice-Chairman |
| 3. Dr. S.I. Edem             | - | Member        |
| 4. Dr. Adekola Adekunle      | - | Member        |
| 5. Engr. Daniel Okonkwo      | - | Member        |
| 6. Mr. Idaa E. Pepple        | - | Member        |
| 7. Engr. J.C. Emerole        | - | Member        |
| 8. Legal Officer             | - | Secretary     |

#### **6. Clinton University Infrastructures Fund**

- |                           |   |               |
|---------------------------|---|---------------|
| 1. Dr. (Engr.) J.I. Eyisi | - | Chairman      |
| 2. Engr. S.M. Nwankwo     | - | Vice-Chairman |
| 3. Dr. (Mrs) E.I. Okonkwo | - | Member        |
| 4. Mr. C.T. Dickson       | - | Member        |
| 5. Prof. O. G. Okogbaa    | - | Member        |
| 6. Mr. B.I. Ibeh          | - | Member        |
| 7. Mr. L.H. Obomanu       | - | Member        |
| 8. Senior Legal Officer   | - | Secretary     |

#### **7. Global Affiliations & Research Collaborations Fund**

- |                                       |   |                      |
|---------------------------------------|---|----------------------|
| 1. Prof. O. G. Okogbaa                | - | Chairman             |
| 2. 5 Principal Deputy Vice Chancellor | - | Member/Alt. Chairman |
| 3. 15 Senior Deputy Vice Chancellors  | - | Members              |
| 4. All Senior Deputy Vice Chancellors | - | Members              |
| 5. The Registrar/Secretary            | - | Members              |
| 6. The University Bursar              | - | Member               |
| 7. The University Librarian           | - | Member               |
| 8. Mr. L. H. Obomanu                  | - | Member               |
| 9. Dr. E.E. Woherem                   | - | Member               |
| 10. Prof. J.O. Abugu                  | - | Member               |

#### **8. Professional Affiliations & Technical Support Fund**

- |                          |   |               |
|--------------------------|---|---------------|
| 1. The PSDVC (Academics) | - | Vice-Chairman |
| 2. Dr. Adekola Adekunle  | - | Member        |
| 3. Engr. I.W. Menim      | - | Member        |
| 4. Dr. U.I. Edem         | - | Member        |
| 5. Mr. M.A.B. Peterside  | - | Member        |
| 6. Dr. B.L. Ogbeifun     | - | Member        |
| 7. Dr. F.C. Anyim        | - | Member        |
| 8. Dr. Lucky Uyigue      | - | Member        |

#### **9. Clinton University National Lobby Board/Fund**

- |                            |   |               |
|----------------------------|---|---------------|
| 1. Mr. Peter I. Esele      | - | Chairman      |
| 2. Dr. E.E. Woherem        | - | Vice-Chairman |
| 3. Mr. C.T. Dickson        | - | Member        |
| 4. Dr. (Mrs.) I. P. Mbano  | - | Member        |
| 5. Engr. I.D. Balami       | - | Member        |
| 6. Dr. (Mrs.) E.I. Okonkwo | - | Member        |
| 7. Mr. K.D. Uranta         | - | Member        |
| 8. Deputy Registrar        | - | Secretary     |

# **19. CUNNCAL ACACDEMIC STRUCTURES**

## **1. The Academic Structure of the University**

The academic structure is designed on expanded basis to deliver 11 Campuses; 120 Colleges, 600 Faculties, 69 Schools, 90 Institutes; 3,600 Departments; 1,200 Programmes, and 5 million students on full enrolment over ten (10) academic sessions.

The Academic and University administration will be headed by the Vice Chancellor/ Chief Academic Officer (VC/CAO). The Vice Chancellor will be supported Campus-wide by one (1) Principal Deputy Vice Chancellor; three (3) Senior Deputy Vice Chancellors; 16 Deputy Vice Chancellors; 100 Assistant Vice Chancellors/ Provosts of Colleges; 600 Deans of Faculties; 125 Administrative Divisional Directors; 69 Academic Directors of Schools and Institutes; 3,600 Heads of Academic Departments; and 750 Heads of Non- Academic and Operations Departments.

## **2. The University Council**

The Chairman of the University Governing Council is Professor S.J.S. Cookey, CFR; a renowned University Administrator, Historian, International Scholar, and Philanthropist. He is the former Vice Chancellor, University of Port-Harcourt and former Pro-Chancellor and Chairman of Council, Obafemi Awolowo University, Ile-Ife, South-West, Nigeria.

The Vice Chancellor designate of the University is Professor O. Geoffrey Okogbaa (a Professor of Engineering) at the University of South Florida, Tampa Florida, USA; who is also the immediate past Vice Chancellor of Federal University, Wukari, Taraba State, North – East Nigeria. The University Board and Council are composed of eminent scholars, academics, captains of industry and world-class professionals.

## **3. National Objectives of The University**

The Project has a national outlook with a campus in each geo-political zone in the Country. The University will sit on a combined space of 66,128 Hectares of land in eight (8) Campuses at Akpabuyo LGA, Cross-River State and Esit-Eket LGA in Akwa-Ibom State; Emuoha LGA, Rivers State; Obafemi/Owode LGA, Ogun State; IhitteUboma LGA, Imo State; Balanga LGA, Gombe State; Kano, Kano State and Gwagwalada, FCT, Nigeria.

Our University aims at becoming a world-class integrated model private Institution with broad based courses, programs and structures intended to strengthen and boost University education in Nigeria. It is intended to bring Nigeria on the global map as an education powerhouse by the quality of its courses and programs; training standards and relevance of such programs to the quest for global education and economic competition, and national development needs.

She will be a four (4) component composite University with full courses and programs compliment, structured into twenty eight (28) Academic Colleges, ninety (90) Institutes and Centers of Law, Engineering, Administration, Management, Social Sciences, Technology,

Education, Medicine, Science, Agriculture, Marine Biology, Wildlife, Special Engineering, Health, Medical Science and Arts; and will operate six hundred (600) faculties, sixty nine (69) Special Pre-Degree and Undergraduate Schools; a Business School, a Graduate College, Post Graduate College, a Research and Post-Doctoral College with six (6) Postgraduate Schools and Research Institutes.

The Medical and Health Colleges of the University will be complemented with a School of Nursing, School of Midwifery, School of Health Technology, School of Hygiene and Environmental Health, School of Orthopedic Nursing and two (2) 300-Bed University Teaching Hospitals as well as the University Veterinary Teaching Hospitals; all with state-of-the-art specialist facilities and equipment.

#### **4. The Student Population and Admission Schedule**

The University proposes to establish eleven (11) Campuses, one each in a geo-political zone in the Country and specialized Academy campuses at Uyo and Opobo with a combined admission capacity of 5 Million students. The projected annual admission table of the University across the Federation shall subject to regulatory approval be as follows:

Year 1:	200,000 Students into 300 Programmes across 3 Campuses
Year 2:	300,000 Students into 400 Programmes across 5 Campuses
Year 3:	400,000 Students into 600 Programmes across 7 Campuses
Year 4:	500,000 Students into 800 Programmes across 9 Campuses
Year 5:	600,000 Students into 1,000 Programmes across 11 Campuses
Year 6:	600,000 Students into 1,200 Programmes across 11 Campuses
Year 7:	600,000 Students into 1,200 Programmes across 11 Campuses
Year 8:	600,000 Students into 1,200 Programmes across 11 Campuses
Year 9:	600,000 Students into 1,200 Programmes across 11 Campuses
Year 10:	600,000 Students into 1,200 Programmes across 11 Campuses
Total	5,000,000 Students&1,200 Programmees across 11 Campuses

#### **5. Campus Locations & Land Sizes**

The Project is a multi-Campus type with the sites and varying land sizes distributed on the six (6) geopolitical zones in Nigeria; and more particularly sitting in the following States and cities with and land sizes as follows:

- i. The Main Campus, Akpabuyo, Calabar on 34,696.07Ha
- ii. The North-East Campus, Gombe, on 20,000Ha
- iii. The North-West Campus, Kano, on 5,000Ha
- iv. The North-Central Campus, Abuja, on 5,000Ha
- v. The South-South Campus, Port-Hacourt, on 5,000Ha
- vi. The South-West Campus, Abeokuta, on 5,000Ha
- vii. The South-East Campus, Umuahia, on 5,000Ha
- viii. The Ibom Campus 1, Eket on 485Ha
- ix. The Ibom Campus 2, Esit- Eket on 474Ha
- x. The Medical Campus, Uyo on 70Ha
- xi. The Marine Campus, Opobo, on 50Ha

#### **6. Campuses & Component Academies**

That for ease of the Management in Nigeria, the University is decentralized into Campuses, Academies and Colleges as follows:

##### **(1) The Main Campus, Calabar, (34,696Ha)**

- (i) The Academy of Medical & Health Sciences (200Ha)
- (ii) The Academy of Engineering (200Ha)
- (iii) The Academy of Environmental Engineering, Sc. & Tech (200 Ha)
- (iv) The Academy of Management & Social Sciences (250Ha)
- (v) The Academy of Arts & Legal Studies (200Ha)
- (vi) The Academy of Graduate Studies (150Ha)
- (vii) The Academy of Pre-Degree Studies (150 Ha)
- (viii) The Academy of Aviation & Aeronautical Sciences (350 Ha)
- (ix) The Academy of Railway Technology & Engineering (200 Ha)
- (x) The Academy of Industrial Tech. & Engrg. Sc. (500Ha)
- (xi) The University Business School (30 Ha)

**(2) The North-East Campus, Gombe (20,000Ha)**

- (i) The Academy of Engrg., Sc. & Tech. (200Ha)
- (ii) The Academy of Management & Social Sciences (200 Ha)
- (iii) The Academy of Arts & Education Studies (200Ha)
- (iv) The Academy of Graduate Studies (100Ha)
- (v) The Academy of Pre-Degree Studies (100Ha)

**(3) The South-South Campus, Port-Harcourt (5000Ha)**

- (i) The Academy of Engrg., Sc. & Tech. (200Ha)
- (ii) The Academy of Management & Social Sciences (200 Ha)
- (iii) The Academy of Arts & Education Studies (200Ha)
- (iv) The Academy of Graduate Studies (100 Ha)
- (v) The Academy of Pre-Degree Studies (100 Ha)

**(4) The Academy of Medicine Campus, Uyo (70Ha)**

- (i) The College of Medicine on (15Ha)
- (ii) The College of Medical Sciences on (15Ha)
- (iii) The College of Health Sciences on (15Ha)

**(5) The Ibom Campus 1, Esit-Eket (485Ha)**

- (i) The Academy of Engrg., Sc. & Tech. (200Ha)
- (ii) The Academy of Management & Social Sciences (200 Ha)
- (iii) The Academy of Arts & Education Studies (200Ha)
- (iv) The Academy of Graduate Studies (100 Ha)
- (v) The Academy of Pre-Degree Studies (100 Ha)

**(6) The Ibom Campus 2, Eket (474Ha)**

- (i) The Academy of Engrg., Sc. & Tech. (200Ha)
- (ii) The Academy of Management & Social Sciences (200 Ha)
- (iii) The Academy of Arts & Education Studies (200Ha)
- (iv) The Academy of Graduate Studies (100 Ha)
- (v) The Academy of Pre-Degree Studies (100 Ha)

**(7) The Academy of Marine Engineering Campus, Opobo, (50Ha)**

- (i) The College of Marine Engineering on 15Ha
- (ii) The School of Oceanography & Marine Sciences on 10Ha

**(8) The South-East Campus, Umuahia (5000Ha)**

- (i) The Academy of Engrg., Sc. & Tech. (200Ha)
- (ii) The Academy of Management & Social Sciences (200 Ha)
- (iii) The Academy of Arts & Education Studies (200Ha)
- (iv) The Academy of Graduate Studies (100Ha)
- (v) The Academy of Pre-Degree Studies (100 Ha)

**(9) The South-West Campus, Abeokuta (5000Ha)**

- (i) The Academy of Engrg., Sc. & Tech. (200Ha)
- (ii) The Academy of Management & Social Sciences (200Ha)
- (iii) The Academy of Arts & Education Studies (200Ha)
- (iv) The Academy of Graduate Studies (100Ha)
- (v) The Academy of Pre-Degree Studies (100Ha)

**(10) The North-Central Campus, Abuja (5000Ha)**

- (i) The Academy of Engrg., Sc. & Tech. (200Ha)
- (ii) The Academy of Management & Social Sciences (200Ha)

- (iii) The Academy of Arts & Education Studies (200Ha)
- (iv) The Academy of Graduate Studies (100Ha)
- (v) The Academy of Pre-Degree Studies (100Ha)

**(11) The North-West Campus, Kano (5000Ha)**

- (i) The Academy of Engrg., Sc. & Tech. (200Ha)
- (ii) The Academy of Management & Social Sciences (200Ha)
- (iii) The Academy of Arts & Education Studies (200Ha)
- (iv) The Academy of Graduate Studies (100Ha)
- (v) The Academy of Pre-Degree Studies (100Ha)

## 7. Campuses & Designed Students Population

1. The Main Campus, Calabar on	34,696Ha	1,125,000 Students
2. The North East Campus, Gombe on	20,000Ha	600,000 Students
3. The South South Campus, Port-Harcourt on	5,000Ha	600,000 Students
4. The North Central Campus, Abuja on	5,000Ha	600,000 Students
5. The North West Campus, Kano	5,000Ha	600,000 Students
6. The South West Campus, Abeokuta on	5,000Ha	600,000 Students
7. The South East Campus, Umuahia	5,000Ha	600,000 Students
8. The Ibom Campus, I & II Eket on	959Ha	200,000 Students
9. The Academy of medicine Campus, Uyo on	70 Ha	50,000 Students
10. The Academy of Marine Engineering Campus, Opobo on	50 Ha	<u>25,000 Students</u>
<b>11. Total</b>	<b>(80,696Ha)</b>	<b><u>5,000,000 Students</u></b>

## 8. Campuses, Colleges, Programmes & Students Population

### i. The Main Campus, Calabar (34,696Ha)

1. College of Foundation Education (Sitting on 30Ha)	25,000 Students	
2. College of Technical & Vocational Studies (Sitting on 30Ha)	15,000 Students	
3. College of Pre-Degree Studies (Sitting on 30Ha)	15,000 Students	
4. College of Pre Medical Studies (Sitting on 30Ha)	15,000 Students	
5. College of Medicine (Sitting on 50Ha)	40,000 Students	
6. College of Medical Sciences (Sitting on 50Ha)		30,000 Students
7. College of Health Science (Sitting on 50Ha)	29,000 Students	
8. College of Engineering (Sitting on 50Ha)	35,400 Students	
9. College of Industrial Engineering (Sitting on 50Ha)	55,800 Students	
10. College of Agricultural Engineering (Sitting on 50Ha)		30,000 Students
11. College of Transport Engineering (Sitting on 50Ha)		41,400 Students
12. College of Sciences (Sitting on 50Ha)	40,200 Students	
13. College of Technology (Sitting on 50Ha)	40,800 Students	
14. College of Environmental Engrg; Sc., & Tech. (Sitting on 50Ha)		30,000 Students
15. College of Special Engineering, Science & Technology (Sitting on 50Ha)	40,400 Students	
16. College of Legal Studies (Sitting on 50Ha)		37,500 Students
17. College of Arts (Sitting on 50Ha)	25,200 Students	
18. College of Humanities (Sitting on 50Ha)	24,000 Students	
19. College of Social Sciences (Sitting on 50Ha)	32,400 Students	
20. College of Agriculture & Econ. Dev. (Sitting on 50Ha)	34,200 Students	
21. College of Wildlife, Marine Biology & Aquatic Studies (Sitting on 50Ha)		31,200 Students
22. College of Education (Sitting on 50Ha)	29,400 Students	
23. College of Management Sciences (Sitting on 50Ha)	29,400 Students	
24. College of Business Studies (Sitting on 50Ha)	30,000 Students	
25. College of Part-Time Studies (Sitting on 50Ha)	300,900 Students	
26. College of Graduate Studies (Sitting on 50Ha)	70,000 Students	
27. College of Postgraduate Studies (Sitting on 25Ha)	20,000 Students	
28. College of Research & Post Doctoral Studies (Sitting on 15Ha)	<u>2,800</u> (Senior Research Fellows)	
<b>29. Total</b>		<b><u>1,125,000 Students</u></b>

**ii. North East Campus; Gombe (20,000Ha)**

1. College of Foundation Education (Sitting on 30Ha)	10,000 Students
2. College of Technical & Vocational (Studies Sitting on 30Ha)	10,000 Students
3. College of Pre-Degree Studies (Sitting on 30Ha)	10,000 Students
4. College of Engineering (Sitting on 50Ha)	22,000 Students
5. College of Sciences (Sitting on 50Ha)	25,000 Students
6. College of Technology (Sitting on 50Ha)	17,000 Students
7. College of Environmental Engrg; Sc., & Tech. (Sitting on 50Ha)	17,000 Students
8. College of Legal Studies (Sitting on 50Ha)	24,000 Students
9. College of Arts (Sitting on 50Ha)	15,200 Students
10. College of Social Sciences (Sitting on 50Ha)	19,400 Students
11. College of Agriculture & Econ. Dev. (Sitting on 50Ha)	21,200 Students
12. College of Education (Sitting on 50Ha)	25,400 Students
13. College of Management Sciences (Sitting on 50Ha)	25,400 Students
14. College of Business Studies (Sitting on 50Ha)	25,000 Students
15. College of Part-Time Studies (Sitting on 50Ha)	330,400 Students
16. College of Graduate Studies (Sitting on 50Ha)	<u>15,000 Students</u>
<b>17. Total</b>	<b><u>600,000 Students</u></b>

**iii. North Central Campus; Abuja (5000Ha)**

1. College of Foundation Education (Sitting on 30Ha)	10,000 Students
2. College of Technical & Vocational (Studies Sitting on 30Ha)	10,000 Students
3. College of Pre-Degree Studies(Sitting on 30Ha)	10,000 Students
4. College of Engineering, Science & Technology (Sitting on 50Ha)	20,000 Students
5. College of Environmental Engrg; Sc., &Tech.(Sitting on 50Ha)	17,000 Students
6. College of Legal Studies(Sitting on 50Ha)	24,000 Students
7. College of Arts(Sitting on 50Ha)	15,200 Students
8. College of Social Sciences(Sitting on 50Ha)	19,400 Students
9. College of Agriculture & Econ. Dev.(Sitting on 50Ha)	21,200 Students
10. College of Education(Sitting on 50Ha)	25,400 Students
11. College of Management Sciences(Sitting on 50Ha)	25,400 Students
12. College of Business Studies(Sitting on 50Ha)	25,000 Students
13. College of Part-Time Studies(Sitting on 50Ha)	317,400 Students
14. College of Graduate Studies(Sitting on 50Ha)	<u>60,000 Students</u>
<b>15.Total</b>	<b><u>600,000 Students</u></b>

**iv. North West Campus; Kano (5000Ha)**

1. College of Foundation Education (Sitting on 30Ha)	10,000 Students
2. College of Technical & Vocational (Studies Sitting on 30Ha)	10,000 Students
3. College of Pre-Degree Studies(Sitting on 30Ha)	10,000 Students
4. College of Engineering, Science & Technology (Sitting on 50Ha)	20,000 Students
5. College of Environmental Engrg; Sc., &Tech.(Sitting on 50Ha)	17,000 Students
6. College of Legal Studies(Sitting on 50Ha)	24,000 Students
7. College of Arts(Sitting on 50Ha)	15,200 Students
8. College of Social Sciences(Sitting on 50Ha)	19,400 Students
9. College of Agriculture & Econ. Dev.(Sitting on 50Ha)	21,200 Students
10. College of Education(Sitting on 50Ha)	25,400 Students
11. College of Management Sciences(Sitting on 50Ha)	25,400 Students
12. College of Business Studies(Sitting on 50Ha)	25,000 Students
13. College of Part-Time Studies(Sitting on 50Ha)	317,400 Students
14. College of Graduate Studies(Sitting on 50Ha)	<u>60,000 Students</u>
<b>15.Total</b>	<b><u>600,000 Students</u></b>

**v. South West Campus, Abeokuta (5000Ha)**

1. College of Foundation Education (Sitting on 30Ha)	10,000 Students
2. College of Technical & Vocational (Studies Sitting on 30Ha)	10,000 Students
3. College of Pre-Degree Studies(Sitting on 30Ha)	10,000 Students
4. College of Engineering, Science & Technology (Sitting on 50Ha)	20,000 Students
5. College of Environmental Engrg; Sc., &Tech.(Sitting on 50Ha)	17,000 Students
6. College of Legal Studies(Sitting on 50Ha)	24,000 Students
7. College of Arts(Sitting on 50Ha)	15,200 Students

8. College of Social Sciences(Sitting on 50Ha)	19,400 Students
9. College of Agriculture & Econ. Dev.(Sitting on 50Ha)	21,200 Students
10. College of Education(Sitting on 50Ha)	25,400 Students
11. College of Management Sciences(Sitting on 50Ha)	25,400 Students
12. College of Business Studies(Sitting on 50Ha)	25,000 Students
13. College of Part-Time Studies(Sitting on 50Ha)	317,400 Students
14. College of Graduate Studies(Sitting on 50Ha)	<u>60,000 Students</u>
<b>15.Total</b>	<b><u>600,000 Students</u></b>

**vi. South South Campus, Port-Harcourt (5000Ha)**

1. College of Foundation Education (Sitting on 30Ha)	10,000 Students
2. College of Technical & Vocational (Studies Sitting on 30Ha)	10,000 Students
3. College of Pre-Degree Studies(Sitting on 30Ha)	10,000 Students
4. College of Engineering, Science & Technology (Sitting on 50Ha)	20,000 Students
5. College of Environmental Engrg; Sc., &Tech.(Sitting on 50Ha)	17,000 Students
6. College of Legal Studies(Sitting on 50Ha)	24,000 Students
7. College of Arts(Sitting on 50Ha)	15,200 Students
8. College of Social Sciences(Sitting on 50Ha)	19,400 Students
9. College of Agriculture & Econ. Dev.(Sitting on 50Ha)	21,200 Students
10. College of Education(Sitting on 50Ha)	25,400 Students
11. College of Management Sciences(Sitting on 50Ha)	25,400 Students
12. College of Business Studies(Sitting on 50Ha)	25,000 Students
13. College of Part-Time Studies(Sitting on 50Ha)	317,400 Students
14. College of Graduate Studies(Sitting on 50Ha)	<u>60,000 Students</u>
<b>15.Total</b>	<b><u>600,000 Students</u></b>

**vii. South East Campus, Umuahia (5000Ha)**

1. College of Foundation Education (Sitting on 30Ha)	10,000 Students
2. College of Technical & Vocational (Studies Sitting on 30Ha)	10,000 Students
3. College of Pre-Degree Studies(Sitting on 30Ha)	10,000 Students
4. College of Engineering, Science & Technology (Sitting on 50Ha)	20,000 Students
5. College of Environmental Engrg; Sc., &Tech.(Sitting on 50Ha)	17,000 Students
6. College of Legal Studies(Sitting on 50Ha)	24,000 Students
7. College of Arts(Sitting on 50Ha)	15,200 Students
8. College of Social Sciences(Sitting on 50Ha)	19,400 Students
9. College of Agriculture & Econ. Dev.(Sitting on 50Ha)	21,200 Students
10. College of Education(Sitting on 50Ha)	25,400 Students
11. College of Management Sciences(Sitting on 50Ha)	25,400 Students
12. College of Business Studies(Sitting on 50Ha)	25,000 Students
13. College of Part-Time Studies(Sitting on 50Ha)	317,400 Students
14. College of Graduate Studies(Sitting on 50Ha)	<u>60,000 Students</u>
<b>15.Total</b>	<b><u>600,000 Students</u></b>

**viii. Ibom Campuses 1 & 2, Eket (959Ha)**

1. College of Foundation Education (Sitting on 30Ha)	5,000 Students
2. College of Technical & Vocational (Studies Sitting on 30Ha)	5,000 Students
3. College of Engrg; Sc., &Tech.(Sitting on 50Ha)	10,000 Students
4. College of Arts(Sitting on 50Ha)	15,000 Students
5. College of Social Sciences(Sitting on 50Ha)	15,000 Students
6. College of Agriculture & Econ. Dev.(Sitting on 50Ha)	15,000 Students
7. College of Education(Sitting on 50Ha)	20,000 Students
8. College of Business & Management Sciences(Sitting on 50Ha)	20,000 Students
9. College of Part-Time Studies	85,000 Students
10. College of Graduate Studies	<u>10,000 Students</u>
<b>11.Total</b>	<b><u>200,000 Students</u></b>

**ix. Academy of Medicine Campus, Uyo (70Ha)**

(i) College of Medicine (sitting on 15Ha)	15,000 Students
(ii) College of Medical Sciences (Sitting on 15Ha)	15,000 Students
(iii) College of Medical & Health Sciences (Sitting on 15Ha)	15,000 Students
(iv) The University Teaching Hospital (Sitting on 10 Ha)	3,000 Students
(v) The Veterinary Teaching Hospital (Sitting on 5Ha )	<u>2,000 Students</u>
<b>Total</b>	<b><u>50,000 Students</u></b>

**x. Academy of Marine Engineering Campus Opobo (50Ha)**

- i. (i) College of Marine Engineering on 15Ha 15,000 Students
- ii. (ii) School of Oceanography & Marine Sciences on 10Ha 10,000 Students
- iii. **Total 25,000 Students**

**9. General Staff Recruitment Schedule (within 7 years)**

1. Pre-Academic Operations	- Business Year 1	- 5% or	9,839 Staff
2. Pre-Academic Operations	- Business Year 2	- 10% or	19,678 Staff
3. Academic Year 1	- Business Year 3	- 20% or	39,356 Staff
4. Academic Year 2	- Business Year 4	- 20% or	39,355 Staff
5. Academic Year 3	- Business Year 5	- 20% or	39,355 Staff
6. Academic Year 4	- Business Year 6	- 15% or	29,517 Staff
7. Academic Year 5	- Business Year 7	- 10% or	<u>19,678 Staff</u>
<b>8. Total</b>			<b><u>196,778 Staff</u></b>

**10. Staffing and Recruitment**

- 1. Business Year 1 & 2: Recruitment of 15% Operations Staff within Nigeria for Business take off 29,517 Staff
- 2. Year 1: Academic Staff exchange in Medicine, Engrg., Sc., & Tech. from Partner foreign Universities 9,839 Staff
- 3. Year 1: Humanities, Arts, Social Sc., Mgt. Sc., Teaching/Non-Teaching & Operations Staff 19,678 Staff
- 4. Year 2: Academic/Non Academic/Operations staff from Nigeria & Nigerians in Diaspora 39,356 Staff
- 5. Year 3: Academic/Non Academic/Operations staff from Nigeria & Nigerians in Diaspora 39,355 Staff
- 6. Year 4: Academic/Non Academic/Operations staff from Nigeria & Nigerians in Diaspora 39,355 Staff
- 7. Year 5: Academic/Non Academic/Operations staff from Nigeria & Nigerians in Diaspora 19,678 Staff
- 8. Total (7 Years) 196,778 Staff**

**11. Management Directorates & Compliment Staff**

- 1. The Executive Board 15 Staff
- 2. Directorate of Executive Management 103 Staff
- 3. Directorate of Management Services 13,807 Staff
- 4. Directorate of General Administration 39,430 Staff
- 5. Directorate of Finance & Accounts 1,500 Staff
- 6. Directorate of Learning Resources 2,500 Staff
- 7. Directorate of Engineering, Infrastructure & Physical Dev. 3,655 Staff
- 8. Directorate of Asset Capital & Investment 3,075 Staff
- 9. Directorate of Academic Affairs 91,908 Staff
- 10. Directorate of Academic Research & Development 3,376 Staff
- 11. Directorate of National Campuses Administration 1,255 Staff
- 12. Directorate of Foreign Campuses Management 1,255 Staff
- 13. Directorate of Bursary Services 1,311 Staff
- 14. Directorate of Agricultural Development & Expansions 3,876 Staff
- 15. Directorate of Industrial Development 5,785 Staff
- 16. Directorate of Operations & Business Development 25,305 Staff
- 17. **Total 196,778 Staff**

## 12. The University Summary of Campuses, Colleges, Staff & Students Population

S/No	Name of Campuses	Academic/Non-Academic Staff Strength				Students Population	No. of Colleges	Remarks
		Academic	Non-Academic	Operations	Total			
1	The Main Campus, Calabar	11,112 30,042		9,830	8,550	1,125,000	25	
2	North-East Campus, Gombe	8,064	5,760	3,500	17,324	600,00	16	
3	South East Campus, Umuahia	6,084	4,320	3,500	13,904	600,000	12	
4	South-South CampusPH.	6,084	4,320	3,500	13,904	600,000	12	
5	North-Central Campus, Abuja	6,084	4,320	3,500	13,904	6,000	12	
6	North-West Campus, Kano	6,084	4,320	3,500	13,904	6,000	12	
7	South-West Campus, Abeokuta	6,084	4,320	3,500	13,904	600,000	12	
8	Ibom Campus, I & II Eket	4,032	2,880	1,500	8,412	200,000	9	
9	Medical Campus, Uyo	2,000	750,000	550	3,300	50,000	3	
10	Academy of Marine Engineering Campus, Opobo	1,000	500,000	250	1,750	25,000	1	
11	Brazil Campus, Rio	7,056	5,040	1,500	(13,596)	(500,000)	14	
12	China Campus, Peking	7,056	5,040	1,500	(13,596)	(500,000)	14	
13	Kenya Campus, Nairobi	7,056 (13,596)	5,040	1,500		(215,000)	14	
14	Uganda Campus, Kampala	7,056	5,040 (13,596)	1,500		(215,000)	14	
15	Zambia Campus, Lusake	7,056	5,040	1,500	(13,596)	(210,000)	14	
16	<b>Total</b>	<b>91,908</b>	<b>65,520</b>	<b>39,350</b>	<b>(67,980)</b> <b>128,798</b> <b>196,778</b>	<b>(1,640,000)</b> <b>5,000,000</b> <b>6,640,000</b>	<b>177</b>	

## 20. Conclusion

In conclusion, each College of the University is conceptualized and designed as a model academic community, complete in every sense. Similarly, every campus is conceptualized and designed as a model academic city, complete with academic, industrial, commercial, social, business and agricultural basic infrastructures; aimed at making the University 85% self-reliant and independent in essential goods and services; facilities and infrastructures, academic advancement, training, research and development.

In pursuance of efficient management of the University; the designed student's population, and programmes are our direct responses to national needs, modern trends and advancement in medicine and health sciences; engineering, science and technology; and their relevance to national quest for development, economic prosperity and global education competition.

We have through deliberate administrative scheme expanded major fields of study and disciplines to accommodate the envisaged high student's population in the University to avoid congestions in colleges, faculties, departments, laboratories, workshops, hostels and in all facilities of the institution.

This is in pursuance of the Objectives, Vision, Mission and Philosophy of the University; and to make living secure and safe, learning attractively interesting, and pleasurable on our campuses.

Finally, as our statement of commitment and mark of excellence by the University; we invite the Commission to give us an infant, and watch us turn him a Surgeon @ 25 in **Clinton University of Nigeria [CUNN], Calabar**, Cross River State, South-South, Nigeria.

In the same vein, we have provided adequately the prescribed requirements in terms of research votes, funding, staffing, land space, hostels and staff accommodation; Lecture halls and Class Rooms; Engineering and technology workshops; Laboratories, Offices, and Recreational facilities amongst others.

We have also adequately provided for staff and students health; recreation, social, spiritual, security, safety, transportation and communication facilities on our campuses. Certainly, we are satisfied and proud to be associated with this project; and have the honour and privilege to invite the Commission to assist our Board in its quest to berth the biggest tertiary institution on African continent, and third largest University globally on enrollment sitting in the Federal Republic of Nigeria.



## THE EXECUTIVE BOARD MEMBERS



Prof. S.J.S Cookay Ph.D. CON:  
Pro-Chancellor & Chairman of Council



C.D. Uranta: FCIA, FIMC,  
Founder & President



Prof. O.G. Okogbaa, Ph.D.  
Vice Chancellor & Chief Academic Officer



Dr. I.P. Mbano, LLB, BL, LLM, Ph.D.  
Board Member & Legal Advisor



Dr. E.I. Okonkwo, MA, Ph.D.  
Senior Vice President & Chief Operating Officer



Dr. E.E. Woherem, Ph.D.  
Advisor, ICT



Dr. O.A. Uwalaka, Ph.D.  
Registrar & Secretary to Council

## 21. CUNNCAL BOARD, TRUSTEES & COUNCIL MEMBERS

### 1. Mr. Clinton Uranta; MBMA (Lond) FCIA, FIMC, FSCT (Sx);

#### Founder/President/ Chancellor CUNNCAL

He is the Group Chairman/Chief Executive of CLINDICK Group NIGERIA (Lead owners) and Promoter of *Clinton University of Nigeria, Calabar*. A Consultant Management Scientist, Author and Publisher of several books and periodicals. A Public Speaker and Lead Consultant in the Nigeria Trade Union Movement. Educated at Business Management Institute London and Sussex College of Technology, England. Member, Business Management Association, England; Member, Chartered Insurance Institute of Nigeria; Member, National Institute of Marketing of Nigeria; Fellow, Chartered Institute of Administration; Fellow, Institute of Management Consultants of Nigeria; and Academic Fellow, Sussex College of Technology, England. He is currently on the boards of several foreign and local corporate organizations.

### 2. HE, Mr. Bill Clinton, Honorary Global Chancellor (Designate) CUNNCAL

He is an American global figure, a lawyer, international statesman, a philanthropist, former Governor of the State of Arkansas and two-term President of the United States of America (USA). He is the Founder & President of Bill, Hillary and Chelsea Clinton Foundation (An International Non-Governmental Organization, NGO). He is the global brand icon of the University and by his appointment, his office will pursue and unite for academic branding, excellence and inter – Clinton Universities/Colleges/Schools and Institutions affiliations and collaborations around the world to achieve a strong global academic brand group for posterity and the good of humanity. His classic education legacies, philanthropic and humanitarian focus on global education, public health, human development and public service are strong attractions for his nomination and subsequent appointment by the Board as Honorary Global Chancellor of the University.

### 3. HE, Dr. Goodluck Ebele Jonathan, GCFR, Honourary African Continental Chancellor (Designate)

Goodluck Ebele Azikiwe Jonathan GCON, GCFR was the President of Nigeria from 2010 to 2015. Prior to that, he served as Vice-President of Nigeria from 2007 to 2010 and as Governor of Bayelsa State from 2005 to 2007. He was elected Bayelsa State Deputy Governor from 1999 to 2005. He is currently Honorary

Special Adviser on Bayelsa State Education Trust Fund Board. In June 2019, Goodluck Jonathan emerged as chairperson of the newly inaugurated International Summit Council for Peace (ISCP).

Dr. Goodluck Ebele Jonathan holds a B.Sc. degree in Zoology (Second-Class Honours), an M.Sc. degree in Hydrobiology and Fisheries Biology and a PhD degree in Zoology from the University of Port-Harcourt. Before he entered politics in 1998, he worked as an Education Inspector, a Lecturer and an Environmental-Protection Officer.

On May 29, 2007 Jonathan was sworn-in as a Vice-President of Nigeria. He took a very low profile under late former President Umaru Yar'Adua; and participated in cabinet meetings and, by statute, was a member of the National Security Council, the National Defence Council, the Federal Executive Council, and was the Chairman of National Economic Council.

On 9 February 2010, by a motion from the Nigerian Senate Goodluck Jonathan was made acting President of the Federation following the long absence of President Yar'Adua who was on a trip to Saudi Arabia from November 2009 for medical treatment. In accordance with the order of succession in the Nigerian constitution following President Umaru Yar'Adua's death on 5 May 2010, Goodluck Jonathan was sworn-in as the President of the Federal Republic of Nigeria on 6 May 2010, becoming Nigeria's 14th Head of State. He was formally elected President of Nigeria on April 18, 2011.

On March 31, 2015, Jonathan conceded the election defeat to General Muhammadu Buhari, who was sworn in to succeed him on 29 May 2015. Jonathan said in a statement he issued on 31 March 2015 that "My ambition is not worth the blood of any Nigerian". To date Jonathan remains the most humble Nigeria's leader and first Nigerian (indeed) African leader to have conceded electoral defeat in office. Now an International States man, Jonathan was unanimously elected by the Executive Board as Chancellor of the University for his legacies in education, peace and leadership integrity.

#### **4. Alabo (Lt. Gen.) K.T.J Minimah; M.Sc, FNDC, CFR, Council Chairman, CUNNCAL**

Alabo (Lt. Gen.) Kenneth Tobias Josiah Minimah (Retired) is the new Chairman of the University Council. He succeeded the pioneer Chairman of the Council, Professor S.J. S. Cookey who withdrew his service from the University on account of age and the new traditional responsibilities placed on his shoulders by his installation as the Head Chief, of Chief Cookey War Canoe House, Opobo Kingdom, Rivers State, Nigeria.

General Minimah was until his nomination and appointment a retired senior army officer, having served and retired as Chief of Army Staff, Nigerian Army in 2015, after 30 meritorious years of successful military career. He attended Township Primary School, Baptist High School and College of Science and Technology (now Rivers State University), Port-Harcourt and graduated in 1978. He was enlisted into the Nigerian Army in 1979 as a member of the 25th Regular Combatant Course of the Nigerian Defence Academy.

He holds the Nigerian Defence Academy Certificate in Education, Advanced Diploma in Public Administration, Bachelor of Arts in History and International Studies and a Masters Degree in Strategic Studies. He is an alumnus of the National Defence College. He attended the Young Officers Course, the Junior and Senior Divisions Staff Courses and the National War College. He also attended specialized Courses in Jungle Warfare and Combat Survival, Basic and Advanced Airborne Courses as well as the Airborne Instructors' Course.

General Minimal at various times in his military career held key Command, Instructional and Staff Appointments, as Commanding Officer, 149 Battalion; Directing Staff at Armed Forces Command and Staff College, Jaji; Commandant, Depot Nigerian Army, Commandant Nigerian Army School of Infantry; Commander, 1 Brigade Sokoto, GOC, 81 Division Lagos and Commander, Infantry Corps, Nigerian Army. He was appointed the 19th indigenous Chief of Army Staff, Nigerian Army in 2013; and he retired from active military service after 30 meritorious years in July 2015.

The former Chief of Army Staff is well decorated with numerous honours and awards which includes the Forces Service Star (FSS), Meritorious Service Star (MSS), Distinguished Service Star (DSS), and Grand Service Star (GSS). The General is a proud holder of the Passed Staff Course + Dagger Award and Distinguished Fellowship of the National Defence College. He holds also the Award of Corps Medal of Honour (CHM), Training Support Medal (TSM), Field Command Medal of Honour (FCMH), the Nigerian

Army Medal (NAM); and is also a proud Honouree and recipient of the National Honour of the Commander of the Order of the Federal Republic (CFR).

He was on Saturday April 16, 2022 in an impressive traditional ceremony of the Oko-Sunju Minimah War Canoe House and people, friends, well wishers and guests at Minimah Community installed the Alabo of Oko-Sunju Minimah war canoe House. He was enthroned as Alabo (Lt. Gen.) Kenneth Tobias Josiah Minimah (Rtd.)(Oko-Sunju VII) of Minimah Community by the Amanyabo of Opobo Kingdom, and Chairman, Rivers State Council of Traditional Rulers; His Majesty, King Dandeson Douglas Jaja, Jeki V, Treaty King and Amanyabo of Opobo Kingdom, Rivers State, Nigeria.

In recreation and sports, General Minimah is still decorated. He is a strong Parachutist of repute breaking barriers and setting records as the first senior officer of Nigerian Armed Forces to jump out of an Aircraft as a Brigadier General.

His passion for Boxing is undying and for this reason was elected President of the Nigerian Boxing Federation since 2010, and still counting. Minimah was honoured in 2014 by the Nigerian Olympic Committee. He was nominated and appointed the Patron of the One Service One Medal Games.

General Minimah is a family man, a father, husband, a traditional ruler, and is happily married and blessed with three (3) children. The retired General is currently engaged in Private Security Consultancies and medium scale crops and animals farming. His hobbies include boxing, road walk and watching documentaries.

#### **5. Lt.Gen. T.Y. Danjuma, CFR; Chairman, Board of Trustees (*Designate*) CUNNCAL**

General Theophilus Yakubu Danjuma, CFR, attended St. Bartholomew's Primary School in Wusasa and Benue Provincial Secondary School in Katsina-Ala where he received his Higher School Certificate in 1958. In 1959 Danjuma enrolled at the Nigerian College of Arts, Science, and Technology in Zaria (Ahmadu Bello University) to study history on a Northern Nigeria Scholarship. However, by the end of 1960, Danjuma had left the university to enroll in the Nigerian Army. Danjuma was commissioned into the Nigerian Army as second lieutenant and platoon commander in the Congo. In 1963, he joined a UN Peace-keeping force in Sante, Katanga Province in Congo, he was promoted to the position of a captain three years later.

In 1967, he was promoted to lieutenant colonel. In 1970, Danjuma attended the International Court Martial in Trinidad and Tobago as Nigeria's representative. He was appointed president of the tribunal in a case brought against members of a failed coup attempt in Trinidad and Tobago. Following his promotion to Colonel in 1971 he spent next two years with responsibility for court-martialling Army officers proven guilty of corruption and indiscipline. In 1975 he was promoted to Brigadier and the position of General Officer Commanding (GOC). He later became the Chief of Army Staff in the Military Government of General Olusegun Obasanjo. He retired from the Nigerian army in 1979 as a Lieutenant General and COAS.

In 1999 he became the Minister of Defence in President Olusegun Obasanjo's Cabinet, and in 2003 was appointed Chairperson of investigative committee on the Warri conflict. In 2010, he was appointed Chairman of the Presidential Advisory Council by Acting President Goodluck Jonathan. Danjuma serves as Chairman of the Victims' Support Fund Committee.

In December 2008, the TY Danjuma Foundation was established in Nigeria. The objectives of the Foundation is to alleviate poverty in communities by providing basic amenities, education for children and young adults while also providing free medical care for indigent people. General Danjuma is a strong voice in the nation's organized private sector. He is the founder and Chairman of the TY Danjuma Foundation which currently partner over 50 NGOs and the 36 State governors in Nigeria. Danjuma is a business mogul and Founder and Chairman of many companies in Nigeria.

General Danjuma was unanimously elected by the Executive Board to chair the Trustees Board of the University for his maturity, experiences, sound leadership and managerial capabilities, industry, philanthropy, enviable integrity and strong business acumen.

## **6. Chief (Maj. Gen.) M. A. Balogun (*mni*) (*Rtd.*) (Advisor; Security, & Intelligence)**

Chief (Major – General) Mufutau Ayinde Balogun (Rtd.) is one of the five (5) Associate Directors of the Company. He is also on the board of some of the group's subsidiary companies. He is the Chairman and Chief Executive of ALMUF (Nigeria) Limited, Lagos.

He attended Saint Mary's Anglican Primary School Osiele from 1952-1958, and Nawair-ud-deen Secondary Modern School, Oke-Ijeun, Abeokuta and got admission into Nigerian Military School Zaria in 1962 and graduated from the school in December 1966 in flying colours.

He gained admission to the Nigerian Defence Academy Kaduna, and upon graduation attend the Royal Military Academy Sandhurst in Britain.

He also bagged a mathematics award among the graduating students from the Royal Military Academy in December 1969, and was immediately posted to 3<sup>rd</sup> Marine Commando in Port Harcourt then commanded by Colonel Olusegun Obasanjo, the former Head of State where he took part in the last stage of the Nigerian Civil war, which ended on 15<sup>th</sup> January 1970.

In October 1974, he was promoted to the rank of a major and was appointed the commanding officer of 131 Battalion Nigerian Army located in Oshogbo. The Battalion under the command of Major Balogun then, was moved from Oshogbo to Lagos and was tasked with the duty of providing security in Festac Town during the famous Festival of Arts and Culture (Fesctac 77), which Nigeria hosted from Feb-May 1977. General Balogun became a student of Command and Staff College, Jaji-Kaduna from August 1977 to July 1978.

In October 1985, he was promoted to the rank of a Colonel and appointed the Defence Adviser at the Nigerian High Commission, Harare-Zimbabwe. The office of the Defence Adviser, Nigerian Embassy in Zimbabwe played an important role in the Liberation struggle in the Southern part of Africa. Through this office, the Federal Government of Nigeria channeled both financial and material resources to support the front line states which include Zimbabwe, Mozambique, Namibia and Botswana in their struggle against the apartheid regime in South Africa.

He was promoted Major- General in October 1994, and in 1995, the General was appointed Commander, Training and Doctrine Command located in Minna and subsequently became a member of the Provisional Ruling Council, PRC, an appointment he held until April 1996. He was appointed Chief of Logistic, Defence Headquarters from May 1996 to August 1998 and in September 1998, he was appointed the Chief of Research and Development, Defence Headquarters an appointment he held until his voluntary retirement from active service on 29<sup>th</sup> May 1999 after 32 years of unblemished service in the Nigerian Army.

The General is a recipient of Force Service Star and Distinguished Service Star medals as mark of his meritorious Services to the Nigerian Army in particular and the nation in general. The Associate Director is a keen golfer and delights in reading. A devout muslim, disciplinarian, and a soldier's soldier.

## **7. Professor O. G. Okogbaa, *B.Sc; M.Sc; Ph.D*; Vice Chancellor/Chief Academic Officer (CUNNCAL)**

A Nigerian – American citizen, Professor of Engineering at the University of South Florida, Tampa Florida, USA who is also the pioneer Vice Chancellor, Federal University, Wukari, Taraba State, North-East, Nigeria. A Scientist, UNESCO Consultant, author, administrator, scholar and member, Nigerian Society of Engineers; as well as Registered Member, Council for Regulation of Engineering in Nigeria (COREN). He attended University of Cincinnati, Cincinnati, USA where he obtained his Bachelor's, Master's and Doctorate Degrees in Engineering. He will bring to bear on the University over 30 years experience in University development, administration and management; as well as Science, Technology, Engineering and Mathematics (STEM).

**8. Dr. (Mrs). E.I. Okonkwo, BA, MA, Ph.D;Senior Vice President/Chief Operating Officer (CUNL)**

She is an Agricultural Economist and Gender Development Specialist, promoting and pursuing Women and Girl-child rights in Nigeria under the auspices of Arise Africa Network (A Non-Governmental Organization – NGO). She studied at the University of Port-Harcourt, and obtained a Bachelor's Degree in Agriculture and two (2) Master Degrees in Conflict Resolution and Gender Development respectively. She holds a Doctorate Degree in Motherhood and Children Development in the same University. Having worked for several International Non-Governmental Organizations (NGOs), Mrs. Okonkwo will bring about 15 years' experience in advocacy and mobilization to bear, and will provide the delicate gender balancing on the University Board composition.

**9. Dr. (Engr.) J. I. Eyisi, B.Sc; M.Sc, Ph.D;Advisor (Infrastructures) , (CUNL)**

He attended Institute of Management and Technology, Enugu; and Nnamdi Azikwe University, Awka, Anambra State. He holds a Higher National Diploma, Post, Graduate Diploma and Masters Degree in Mechanical/Production Engineering. He is currently a Ph.D. Student of the University and holds Professional and Graduate Certificates in Engineering Evaluation and Practice. He is a Member, Nigerian Society of Engineers (MNSE) and specializes in maintenance of Electrical and Mechanical Engineering Systems. He is the Chairman/Chief Executive of AIK Global Ventures Limited and is currently on the board of other corporate organizations.

**10. Professor C. C. Nwachukwu, B.Sc, M.Sc, Ph.D;Alt. Chair Academic Board, CUNNCAL**

He attended Howard University, Washington DC; California State University and University of California Los Angeles, California, USA. He holds the Bachelors, Masters and Doctorate Degrees in Law, Economics, Business and Management. He was an Assistant and Associate Professors at the Claremont Colleges and California State Polytechnic, University of Pomona, California, USA. He was also a Senior Lecturer at University of Nigeria, Nsukka and later Professor of Management, University of Port-Harcourt. He is currently the Director University of Port-Harcourt Business School. He is an author, Research Fellow and had served on several academic boards, committees and is an external examiner to 22 Universities in Nigeria.

**11. Dr. O. A. Uwalaka,BA, MA, Ph.D; The Registrar and Secretary to Council, CUNNCAL**

The Registrar is a consummate University manager and academician having served at different times in both academic and non-academic divisions of University of Ibadan, Rivers State University, University of Nottingham and University of London respectively. Dr. Uwalaka attended University of Ibadan and Pennsylvania State University where he read and obtained his Bachelors, Masters and Doctorate Degrees in Political Science, Public Administration and Higher Education respectively. He will bring about 40 years combined experience to bear on the new University's administration and management. He is an Anglican and holds the Knighthood of St. Christopher, KSC.

**12. Dr. Evanse E. Woherem, B.Sc, M.Sc, Ph.DAdvisor (ICT), CUNNCAL**

He attended University of La Verne, California USA; University of Warwick and University of Manchester, England as well as Harvard Business School, Boston, USA. He holds the Bachelors, Masters and Doctorate Degrees in Economics and Information Technology. He was Group Executive Director Unity Bank; Executive Director and later Acting Managing Director, First Bank. He worked also at various times for defunct FSB International Bank in Nigeria and later for ABSA Bank South-Africa, Lloyds Register London, University of Strathclyde, Glasgow; Manchester Metropolitan University and University of Manchester, England respectively. He is currently Chairman/Chief Executive of Compumetric Solutions Limited and is on the board of over 15 local and foreign blue-chip corporate organizations.

Dr. Woherem's Profile I am an industry professional and alumnus of Harvard Business School with extensive experience in: Executive Management, Project Management, Metrication, Business Intelligence, Expert Systems, Business Process Modelling and Re-Engineering, as well as Strategic Planning and Execution. I am a Certified Management Consultant, Institute of Management Consultants, Fellow of the Academy of Business Brokers and Managers, United Kingdom, Fellow of the Institute of Credit Administration of Nigeria. Currently I am the MD/CEO, Compumetrics Solutions Ltd., an IT Consultancy company, Chairman, Digital Africa, Africa's premier consumer technology show which holds

annually, Chairman, Northlink Insurance Brokers Ltd, an Insurance Brokerage company, Chairman, Chams Access Ltd., Director, Chams Plc. I am also the Facilitator of the Business Information Systems module of the MSc/PhD degrees of the University Of Port Harcourt Institute Of Engineering, Techn.

**13. Professor Joe Amadi – Echendu, Academic Advisor (Engineering Sc. & Technology), CUNNCAL**

He is a Professor of Engineering and Technology Management at University of Pretoria, South-Africa as well as the founding Director, Institute of Engineering, Technology and Innovation Management, University of Port—Harcourt, Nigeria. He attended Rivers State College of Science and Technology, Port-Harcourt; University of Wyoming, USA and University of Sussex, UK; where he obtained Bachelors, Master and Doctorate Degrees in Electrical, Electronic & Control Engineering. He is a Registered and Chartered Professional Engineering in South-Africa and United Kingdom.

**14. Mr. Anthony F. Epelle; B.Sc, MBA, FCA;Advisor (Investment), CUNL**

He is an Economist and Chartered Accountant with over 35 years post-qualification experience and has worked at the top management levels of key chartered accounting firms and banks in Nigeria and is currently consulting for over 30 blue chip organizations, State Governments, Federal Agencies and International Organizations. He attended University of Ibadan and Lagos Business School where he bagged Degrees and Post-Graduate Diploma in Economics, Management and Leadership studies respectively. He is currently the Chairman of two (2) European Companies, Director in ten (10) Nigerian Companies and the Managing Consultant and Chief Executive of Samuelson Consulting Limited.

**15. Dr. (Mrs.) Ibiene Pamela Mbano, LLB, BL, LLM, Ph.D,ACIS, FCIA;(Advisor, Legal)**

The Advisor, Legal Matters is Mrs. Ibiene Pamela Mbano, a Lawyer and former Director of Public Prosecutions (DPP), Rivers State, Nigeria. She attended Federal Government Girls College, Abuloma; Rivers State University of Science and Technology (RSUST) from where she obtained a Bachelor's Degree (LLB) Law in 1990. She was called to Bar (BL) in 1992 and her career began in Private Practice in same year in the Law firm of E. B. Ukiri& Co. She joined the Rivers State Newspaper Corporation in 1996 where she doubled as Company Secretary and Legal Adviser; and later Ministry of Justice in the Public service of Rivers State Government in 1998 as a State Counsel.

By dint of hard work and dedication, Mrs. Mbano grew in the civil service to the positions of Senior State Counsel, Principal State Counsel, Chief State Council and currently an Assistant Director attached to the Chambers of the Honourable Attorney General of Rivers State.

She is a Legal Practitioner with over 28 years post - call experience, and earned a Masters Degree in Public Law (LLM) from the University of Lagos in 2010, and is active in the academics of corporate practice. Mrs. Mbano is the daughter of late Professor B. A. Fubara, and she is a Part-time Coordinator of the Institute of Chartered Secretaries and Administrators of Nigeria, (ICSAN) Training Center in Rivers State and has been a Facilitator in the subject of Corporate Administration since 2011.

Professionally, she is a member of Nigerian Bar Association (NBA); an Associate Member of Institute of Chartered Secretaries and Administrators, ACIS; The Society of Corporate Governance; a Fellow of Chartered Institute of Administration, FCIA; and a Member of the Continuing Legal Education Committee of the Nigerian Bar Association, NBA. Mrs. Mbano has participated and still participating in public Business meetings, Workshops, Seminars and Conferences through the Office of the Public Defender; the Institute of Chartered Secretaries and Administrators; and the Nigerian Bar Association since 2007. She is currently the Assistant Director in the Office of the Public Defender (Free Legal Services for the Indigent), Ministry of Justice, Port - Harcourt, Rivers State, Nigeria.

**16. Mrs. E.A.Omoruyi, B.Sc, M.Sc, PGD; (Advisor, International Relations), CUNNCAL**

She is a special needs children education consultant and Montessori's nursery standard professional. She attended Ambrose Ali University Ekpoma, and University of Lagos, Akoka Lagos, where bagged degrees in International Relations and Diplomacy; and Special Needs Children Education respectively.

Her career began in NNPC Corporate Affairs Division before she moved into private sector as basic education entrepreneur and consultant with strong presence in Abuja, Benin and Port-Harcourt. She joined CLINDICK Group NIGERIA in 2020 as an Executive Director in charge of Foundation Education in the group's subsidiary, CUNL, owners and promoters of Clinton University of Nigeria, Calabar, (CUNNCAL). Mrs. Omoruyi will bring to bear over fifteen (15) years experience in children education consultancy, development and management. She is happily married and blessed with children. Her hobbies include sports, indoor games, reading and intellectual development engagements.

## 22. PROFILE OF KEY STAFF OF CLINDICK GROUP

### (i) **Dr. E. E. Woherem, B.Sc, M.Sc, Ph.D; Group Managing Director/Chief Operating Officer**

Dr. E. E. Woherem is the Group Managing Director and Chief Operating Officer of CLINDICK Group NIGERIA. He joined the Group in 2021 and bring over 35 years experience in Banking, Finance, Information Technology and Consultancy in global corporate community.

Dr. Woherem attended University of La Verne, California USA; University of Warwick and University of Manchester, England as well as Harvard Business School, Boston, USA. He holds the Bachelors, Masters and Doctorate Degrees in Economics and Information Technology. He was Group Executive Director Unity Bank; Executive Director and later Acting Managing Director, First Bank. He worked also at various times for defunct FSB International Bank in Nigeria and later for ABSA Bank South-Africa, Lloyds Register London, University of Strathclyde, Glasgow; Manchester Metropolitan University and University of Manchester, England respectively. He is currently Chairman/Chief Executive of Compumetric Solutions Limited and is on the board of over 15 local and foreign blue-chip corporate organizations.

By Dr. Woherem's Profile, he is an industry professional and alumnus of Harvard Business School with extensive experience in: Executive Management, Project Management, Metrication, Business Intelligence, Expert Systems, Business Process Modelling and Re-Engineering, as well as Strategic Planning and Execution. He is a Certified Management Consultant, Institute of Management Consultants, Fellow of the Academy of Business Brokers and Managers, United Kingdom; of the Institute of Credit Administration of Nigeria. He joined NIDC from his last office as the MD/CEO, Compumetrics Solutions Ltd., an IT Consultancy Company, Chairman, Digital Africa, Africa's premier consumer technology show which holds annually; Chairman, Northlink Insurance Brokers Ltd, an Insurance Brokerage Company; Chairman, Chams Access Ltd; Director, Chams Plc; and as the Chief Facilitator of the Business Information Systems module of the MSc/PhD degrees of the University of Port Harcourt, Institute of Engineering, Technology, Nigeria.

### (ii) **Dr (Mrs). E.I. Okonkwo, BA, MA, Ph.D; Senior Vice President/Chief Operating Officer**

She is an Agricultural Economist and Gender Development Specialist, promoting and pursuing Women and Girl-child rights (A Non-Governmental Organization – NGO) and later Head of Victims and Vulnerable women and children; and Budget Manager of UNDP sponsored projects in the United Nations Organization (UNO) office in Nigeria. She studied at the University of Port-Harcourt, and obtained a Bachelor's Degree in Agriculture and two (2) Master Degrees in Conflict Resolution and Gender Development respectively. She holds a Doctorate Degree in Motherhood and Children Development in the same University. Having worked for several International Non-Governmental Organizations (NGOs) and the United Nations, Mrs. Okonkwo will bring over 20 years' experience in advocacy, mobilization, corporate budgeting and international finance and welfare management to bear, and will provide the delicate gender balancing on the University Management Board composition.

### (iii) **Professor O. G. Okogbaa, B.Sc; M.Sc; Ph.D; Vice Chancellor/Chief Academic Officer**

A Nigerian – American citizen, Professor of Engineering at the University of South Florida, Tampa Florida, USA who is also the pioneer Vice Chancellor, Federal University, Wukari, Taraba State, North-East, Nigeria. A Scientist, UNESCO Consultant, author, administrator, scholar and member, Nigerian Society of Engineers; as well as Registered Member, Council

for Regulation of Engineering in Nigeria (COREN). He attended University of Cincinnati, Cincinnati, USA where he obtained his Bachelor's, Master's and Doctorate Degrees in Engineering. He will bring to bear on the University over 30 years experience in University development, administration and management; as well as Science, Technology, Engineering and Mathematics (STEM).

**(iv) Mrs. E.A.Omoruyi, B.Sc, M.Sc, PGD; (Asst. Vice Chancellor Foundation Education)**

She is a special needs children education consultant and Montessori's nursery standard professional. She attended Ambrose Ali University Ekpoma, and University of Lagos, Akoka Lagos, where bagged degrees in International Relations and Diplomacy; and Special Needs Children Education respectively. Her career began in NNPC Corporate Affairs Division before she moved into private sector as basic education entrepreneur and consultant with strong presence in Abuja, Benin and Port-Harcourt.

She joined CLINDICK Group NIGERIA in 2020 as an Executive Director in charge of Foundation Education in the group's subsidiary, CUNL, owners and promoters of Clinton University of Nigeria, Calabar, (CUNNCAL).

Mrs. Uranta will bring to bear over fifteen (15) years experience in children education consultancy, development and management. She is happily married and blessed with children. Her hobbies include sports, indoor games, reading and intellectual development engagements.

**(v) Dr. O. A. Uwalaka, BA, MA, Ph.D; *The Registrar and Secretary to Council***

The Registrar is a consummate University manager and academician having served at different times in both academic and non-academic divisions of University of Ibadan, Rivers State University, University of Nottingham and University of London respectively. Dr. Uwalaka attended University of Ibadan and Pennsylvania State University where he read and obtained his Bachelors, Masters and Doctorate Degrees in Political Science, Public Administration and Higher Education respectively. He will bring about 40 years combined experience to bear on the new University's administration and management. He is an Anglican and holds the Knighthood of St. Christopher, KSC.

**(vi) Mr. A. O. Okonkwo, B.Sc, M.Sc, MNIA(Head, Const. & Est. Dev. Dept.)**

Mr. Amaechi O. Okonkwo is an Architect by profession. He hails from Ozuakoli in Abia State and attended Government College Ozuakoli and University of Nigeria, Nsukka where he bagged Bachelors Degree (B.Sc) Architecture in 1994. He is a Member of Nigeria Institute of Architects (Mnia). He is married with children, and enjoys indoor games, reading, writing and music.

**(vii) Mr. A.O. Nsitem, B.Sc, M.Sc, MBA (Head, Specialized Projects Dept.)**

Mr. Nsitem hails from Emuoha Local Government Area of Rivers State. He attended Government School Emuoha and Baptist High School Port-Harcourt before proceeding to University of Benin, Benin City, Edo State for further studies where he bagged both Bachelors and Master Degrees in Marketing and Management respectively. He also pursued and obtained a Master of Business Administration (MBA) Degree (Finance) from University of Lagos.

Mr. Nsitem immediately after graduation joined African Petroleum Plc as Management Trainee and retired from the company in 2004 as General Manager (Special Projects) having served the company variously as Marketing Manager, Planning Manager as well as Administration and Human Resource Manager. Mr. Nsitem joined CLINDICK in 2006, and is the Head of Division (Specialized Projects).

**(viii) Mr. T.A.B. Keme, B.BA, MBA, MNIM, AMA (Head, Admin/Finance Dept.)**

Mr. Keme hails from Kaiama, Bayelsa State and holds the Bachelor of Business Administration Degree in Accounting (Accountancy) and the MBA Degree in Marketing and Finance from the University of the District of Columbia in Washington D.C, United States of America. He is a Member of Nigeria Institute of Management and American Marketing Association.

He worked for the Federal Ministry of Finance as an Accountant and later with defunct Pan African Bank Ltd where he rose to the rank of Chief Inspector. He also worked for defunct Crystal Bank of Africa Ltd as

Head of Internal services in the Administration department. He was also a senior lecturer in the Faculty of Management Sciences, Rivers State University of Science and Technology, Port-Harcourt. Mr. Tobias Keme who is married with children has at various times served as director of West African Glass Industry Ltd; Apex Eastern Nigeria Ltd and Council member, Rivers State Polytechnic, Bori. He is the company's Head of Administration/Finance.

**(ix) Mrs. E.A. Ofurumah, B.Sc, M.Sc, ACIS, (Head Mgt. Consulting &Trg. Dept.)**

Mrs. Elizabeth Ofurumah (nee Owupele) is a native of Twon-Brass, Bayelsa State. She attended St Paul School Nembe and Federal Government Girls College, Abuloma, Rivers State. Mrs. Ofurumah had her tertiary education at London School of Economics from where she obtained a Bachelors Degree in Management and Master of Science degree in Business Strategy and Management. She is a Chartered Secretary and Administrator of United Kingdom, and worked for Royal Society of Arts and Institute of Cost and Management Accountants of England as Assistant Chief Examiner and Assistant Secretary-General (Exams and Records) respectively.

Mrs. Ofurumah is the company's Head, Management Consulting and Training Division. She is married to Dr. Silas Ofurumah of UPTH and their marriage is blessed with four children. Her hobbies include Music, Swimming, Writing and Gardening.

**(x) Mr. B.C. Nwabueze, B.Sc. (MNIM) (Head Manpower Capital),**

Mr. Bigman Nwabueze is a management training Consultant. He hails from Isiokpo in Ikwerre Local Government, Rivers State. He attended Ikwerre-Etchie Grammar School, Okehi and Rivers State University of Science and Technology, Port-Harcourt from where he obtained a Bachelors Degree in Management. Mr. Nwabueze is married and blessed with children, and runs a private management training business in Port-Harcourt. He was appointed one of the Company's Nominal directors in early 2006. His hobbies include Lawn Tennis, Reading and Writing.

**(xi) Engr. I.H. Asanaeneng, B.Sc (Hons) ARSM, MNSE (Head, Engineering)**

Engr. Ignatius Harry Asanaeneng was born 60 years in Ikot Inyang, Oruk-Anan LGA of Akwa Ibom State. He attended Regina Coeli College, Essene, Ikot-Abasi and Hope Waddell, Calabar where he read Physics, Pure and Applied Mathematics at advance level. He graduated from Imperial College London in 1975 as a Petroleum Engineer. He worked as a Consultant Petroleum Engineer for Brown's Geological Information Services, London. Back here in Nigeria he also worked for The Shell Petroleum Development Company of Nigeria Limited as Petroleum Engineer. He resigned in 1986 to establish HACFAM Company (UK) Ltd, which he is the Chairman and Managing Director. An author of many books, Engr Asanaeneng is married with children. His hobbies include writing and motion problem solving.

**(xii) Dr. Theodore Osuala, MB BS, FWACP (Head, Medical Services)**

Dr. Osuala is an alumnus of the University of Port-Harcourt. He is a Gynecologist and began his medical career with University of Port-Harcourt Teaching Hospital, Port-Harcourt, Rivers State. He is a Fellow, West African College of Physicians, (FWACP). Dr. Osuala who is a member of Nigeria Medical Association is based in UK where he is engaged in active practice as a medical practitioner. He is married with children. His hobbies include reading, traveling and indoor games.

**(xiii) Mr. P.O. Obah, HND, B.Sc, ACA;Accountant**

Mr. Pius Obah attended Pilgrim Baptist Vocational School IsseleUku in Aniocha North Local Government Area in Delta State, Nigeria. Mr. Obah holds academic and professional education qualifications of GCE 'O' Level and 'A' Level in Accounting, OND and HND in Accounting and attended Ibadan Polytechnic. Prior to Higher Certificate in Nigeria, Mr. Obah obtained a diploma in Accounting (Advance Level) from the Institute of Book Keepers London, Business Management Diploma from Institute of Commerce London and also from Institute of Chartered Management Auditors Diploma.

He has over 20years experience in finance focusing primarily on Accounting, Auditing and in Departmental Routine Administrations. He worked for Lagos Sheraton Hotel Plc, and All Season Hotel, Owerri, Imo State as Chief Internal Auditor. He was also at Picadilli Suite Lekki, Lagos where he served as an Assistant General Manager.

The Accountant is married, has children; a Christian by faith, born in August, 1963 at IdumuOgo, IsseleUku in Aniocha Local Government Area, Delta State.

**(xiv) Mrs. V.O. Umeh, B.Ed; Head of Administration**

Mrs. Vivian OnyinyeUmeh, hails from Imo State in Ngor-Okpala Local Government Area, Imo State. She was born on August 9<sup>th</sup> 1985 in Lagos State, Nigeria.

Mrs. Vivian had her First School Leaving Certificate in AgbadoIjaiye Primary School, Lagos in 1996. Her Secondary School Education at Prime Amos Grammar School, Abule Egba, Lagos in 2003.

She holds a Diploma in Computer Studies and attended Nnamdi Azikwe University, Akwa in Anambra State, where she obtain a Bachelor (B.Ed) Degree in Accounting Education, in 2008. She did her National Youth Service Corp (NYSC) at AgbadoOko-Odo Local Council Development Area in the Treasury department as Asst. Officer in 2011. Later worked at CLINDICK Group NIGERIA in 2016 as the Administrative Head. She is also married to Mr. Alexander ChinwenduUmeh and their marriage is blessed with children; a Christian by religion. Her Hobbies are Listening to Music, Reading Motivational Books, Cooking and Dancing.

## **23. LEGAL, FINANACIAL & MANAGEMENT CONSULTANTS**

### **1. Legal Advisers & Consultants**

- i. **AmabibiOzurumbaNsirim, LLB, BL, LLM, Head of Chambers**  
Amabibi& Associates,  
Plot 4, Second Avenue, Elekahia Housing Estate,  
Port-Harcourt, Rivers State.
- ii. **Synergy Attornies**  
A.J. Owonikoko (SAN),  
(Barristers & Solicitors)  
Synergy Chamber,Ajah, Lagos
- iii. **Ade – Ademuwagun, LLM, BL, AMNIM**  
Bisi Ade – Ademuwagun& Co.  
15, Oremeji Street, 2<sup>nd</sup> Floor,  
Off Medical Road,Ikeja, Lagos

### **2. Financial & Management Consultants**

- (i) **Prince Water House Coopers (PWC),**  
5B Adeniyi Jones,  
Victoria Island,  
Lagos
- (ii) **Samuelson Management Limited,**  
8, Adeola Street,  
South-west, Ikoyi,Lagos.

- (iii) **Akintola Ayoade & Co.**  
(Chartered Accountants)  
26, Oduyemi Street,  
P. O. Box 2352, Ikeja, Lagos

### **3. Bankers**

- (i) **First Bank of Nigeria Plc**  
46, Oba Akran Avenue, Ikeja  
Lagos, Nigeria
- (ii) **United Bank for Africa Plc**  
27, Oba Akran Avenue, Ikeja  
Lagos, Nigeria
- (iii) **Access Bank Plc**  
Simbiat Abiola (Medical Road),  
Ikeja, Lagos, Nigeria
- (iv) **Zenith Bank Plc,**  
15, Oba Akran Avenue,  
Ikeja, Lagos, Nigeria.

## **24. CONTRACTORS, CONSULTANTS & FINANCIERS**

### **1. Engineering Contractors**

- (i) Sinomach Heavy Industry Corporation, China
- (ii) Odebrecht Construction & Engineering Company, Brazil
- (iii) Betchel Corporation LLC, USA
- (iv) AECOM Construction Company LLC, USA
- (v) SCEGC Engineering Company Limited, China
- (vi) Julius Berger Nigeria Limited, Nigeria
- (vii) Sharpooji Pallonji Group, India
- (viii) Contracta Engineering Company SA, Brazil
- (ix) Vita Construction Company Nigeria Limited, Nigeria

### **2. Foreign Engineering Consultants**

- (i) Arup & Partners UK Limited, United Kingdom
- (ii) Globetrad International Limited, United Kingdom
- (iii) Egis Batiments International, France

### **3. Technical Partners**

- i. **Egis Batiments International, France**  
4, Rue Dolores Ibarruri,  
93100 Montreuil, France  
Europe.
- ii. **Sharpooji Pallonji Group, India**  
Sp Centre,  
41/44 Minoo Desai Mangi,  
Colaba Mumbai,  
400005 India.
- iii. **Contracta Engineering UK Limited**  
Central Court,  
25, Sothampton Buildings,  
London WC2A 1AL, England.

**iv. Siemens Energy AG**

Otto- Hahn- Ring 6 Muenchen,  
81739, Germany, Europe.

## **4. Financiers & Partners**

- (i) National Standard Finance LLC, USA
- (ii) The Rosenthal Group (TRG) LLC, USA
- (iii) Amaltheia Finance Limited, UK
- (iv) International Energy Development Group LLC, USA

## **5. Local Civil Engineering Consultants**

- (i) **Unique Designs & Shelters Limited**  
(Consulting Architects & Civil Engineer)  
99, Old Otta Road, Off Lagos-Abeokuta Expressway,  
Agege, Lagos.
- (ii) **Gems Techniques Limited**  
(Consulting Engineers, Land Surveyors & Urban Planners)  
12, Olufemi Road,  
Surulere, Lagos.
- (iii) **Merlin Associates Limited**  
(Chartered Architects & Project Managers)  
18, Falolu Road, Surulere,  
Lagos.
- (iv) **Hybrid Technologies Limited**  
(Consulting Architects & Civil Engineers)  
2, Olayemi Street, Off Nnobi Street,  
Surulere, Lagos.
- (v) **Den Associates**  
(Quantity Surveyors)  
36, Ehi Street, Surulere  
Lagos
- (vi) **Adhoc Associates**  
(Consulting Civil & Structural Engineers)  
2, Olayemi Street, Off Nnobi Street,  
Surulere, Lagos



### **C. CUNNCAL Basic Buildings Drawing PresentationS**

Presentation drawings and pictorial views of Basic administrative and academic buildings of Clinton University of Nigeria (CUNNCAL) main Campus at Calabar. The Academic buildings, Staff accommodation and Student hostel facilities will be replicated in the geopolitical and city campuses of the University across Nigeria.



**Main Entrance Gate**



**The Senate Building**



**300 Beds University Teaching Hospital**



**The University Academic Building**



**5,000 Seats Capacity Central Library Building**



**Student Hostel Block**



**500 Seater Lecture Theatre With Administrative Block**



**Staff Accommodation Block**



**2,500 Seater Auditorium**



**College Library & Ict Building**



**University Research& Development Centre**



**Central University Bookshop**



**Non Academic Staff Accommodation**



**Academic Staff Accommodation**



**250 Shops Shopping Centre**



**Commercial House**



**The University Visitor's Lodge**



**Faculty Building**



**Twin Dining Hall with Industrial Kitchen**